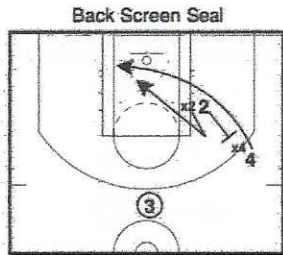


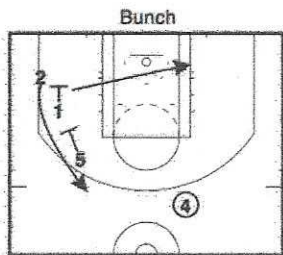
How Golden State Attacks Switches



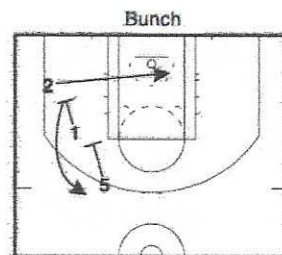
2 sets a back screen for 4. 4 sprints his cut through off the back screen.



2 turns to seal x4 on the perimeter.



Big starts high. One guard slips to the rim as the other guard comes off the big's screen.



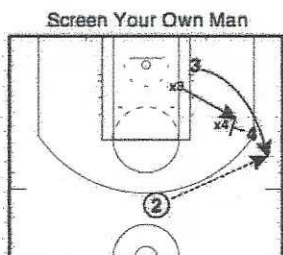
Big starts high. One guard slips to the rim as the other guard comes off the big's screen.



4 cuts off 5's zipper screen. 1 passes to 4. 3 screens down to 2.



2 sets a ball screen for 4. 5 sets a flare for the screener.



Rather than screening the cutter's defender (x3), 4 screens his own man (x4 who is ready to switch onto the cutter).



2 tight curls 1's screen right into x1's body.



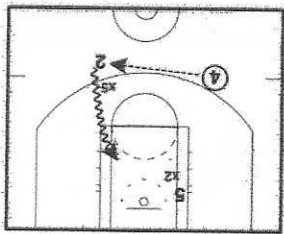
The screener separates from the screen as to draw a long closeout from x2.

How Golden State Attacks Switches



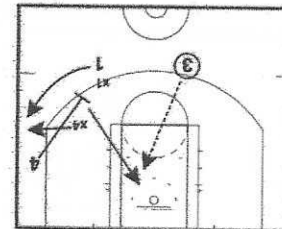
Small/Big Back Screen

2 sets a back screen for 5.



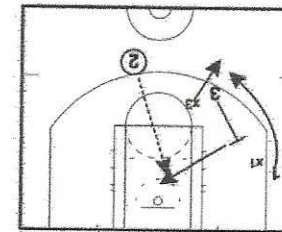
Small/Big Back Screen

4 passes to 5 to drive the perimeter mismatch.



Flare Screen Slips

4 sets a flare for 1. As x4 steps out to take on 1 coming off the flare, 4 dives to the rim.



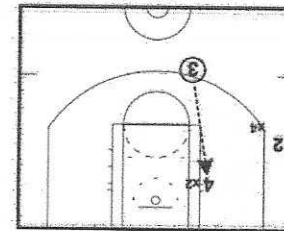
Pindown Slips

3 slips his down screen for 1.



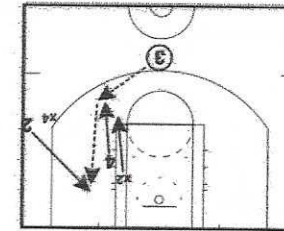
Down Screen Post

4 screens for 2. X4 switches onto 2. 4 screens for 2. X4 switches onto 2. 4 steps into x2's body.



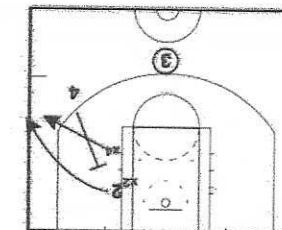
Down Screen Post

3 looks to pass it to 4 on the left block.



Elbow Flash Backdoor

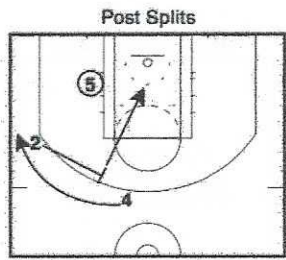
4 flashes to the elbow and looks to hit 2 cutting backdoor with x4 above his body.



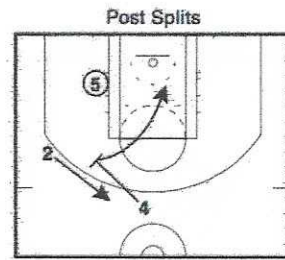
Elbow Flash Backdoor

4 screens down for 2. X4 switches onto 2.

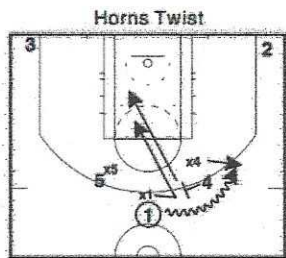
How Golden State Attacks Switches



On 5's post catch, 2 moves to screen for 4. 2 slips his screen on the switch.



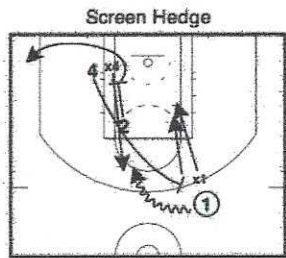
On 5's catch, 4 sets a flare screen for 2. 4 slips the screen on x2 and x4's switch.



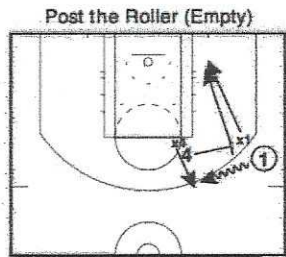
Horns formation, 1 dribbles off 4. X4 switches onto 1 as x1 takes on 4's roll.



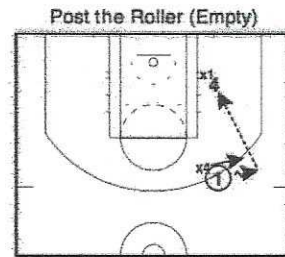
5 sprints into a ball screen for 1. X4 and x5 have to negotiate the 1/5 pick & roll.



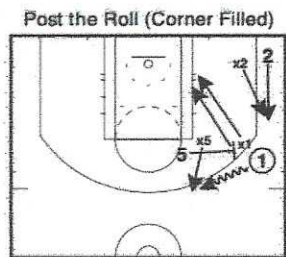
2 screens in for 4 causing x4 to be late on his switch onto the guard in the pick & roll.



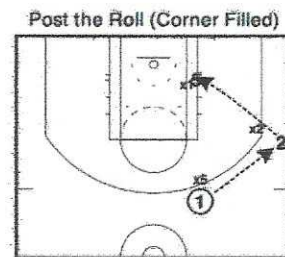
X4 switches on 1 on the side pick & roll.



1 throws it into 4 posting up the mismatch.

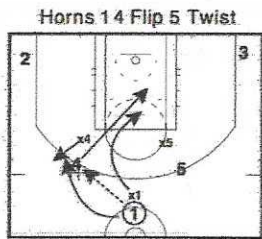


X5 switches onto 1 on the side pick & roll. 2 lifts up as the shake man.



1 passes to 2 who looks to feed 5.

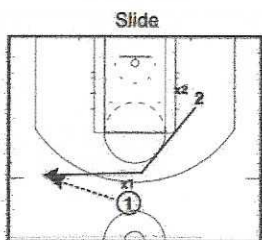
How Golden State Attacks Switches



1 passes to 4 and follows for a handoff. X4 switches onto 1. 4 rolls with x1 on him.



5 sprints into a ball screen for 1 once he has received the handoff.



2 sprints to set a high pick and roll, but cuts his screen off early and sprints to a spot on the left wing. His cut and late change of direction causes confusion as to whether a switch should have occurred or not.