

A close-up photograph of a basketball being held by several hands. The basketball is orange with black lines. A large, blue, stylized graphic element, resembling a speech bubble or a large letter 'A', is overlaid on the left side of the image. The text is centered on the basketball.

# TEMPLE MATCH-UP ZONE DEFENSE

"The zone that  
caused fear in the  
NCAA Tournament"

"A Men's Basketball Hoop Scoop eBook"

Notes and Diagrams were compiled by  
**Coach Peterman**

## **Introduction to the "World Famous" Temple Match-up Zone Defense**

According to Wikipedia, the free encyclopedia:

"Match-up zone defense is a type of defense used in the game of basketball. It is commonly referred to as a "combination" defense, as it combines certain aspects of man-to-man defense and zone defense. Perhaps the most famous user of the match-up zone was John Chaney, former head basketball coach at Temple University."

"With the match-up zone defense, the on-ball defender will play tight as if he was playing man-to-man. At the same time, the zone away from the ball will resemble "help-side" man-to-man defense. This creates one of the advantages for the match-up zone, as it may confuse the opponent as to what defense you are actually playing. The match-up zone also resembles a "switching man-to-man" defense, where the big men stay down low in the post and the guards stay around the perimeter."

For the first time in history, this e-book is the only basketball coaching booklet on the "World Famous" Temple Match-up Zone Defense. His match-up zone defense helped Coach Chaney's Temple Owls to the Big Dance. He had 23 of his 24 teams play in the post-season tournaments with 17 NCAA tournament appearances. His teams had 12 straight appearances in the March madness brackets from 1990 to 2001.

**Disclaimer:** This e-book is complementation of notes on the Temple Match-up Zone notes and not written by Coach John Chaney. It has been taken from watching hours upon hours of old footage of Temple University and from talking with former players.

## **"World Famous" Temple Match-up Zone**

### Objectives:

1. Always have a defensive player in position to put pressure on the ball against any offensive entry.
2. Once the offense has declared a side of the court, the defense must keep it there. No ball reversal.
3. Allow no free and easy passing lanes.
4. Stop penetration by dribble or pass.
5. Contest every shot. (Even 3 point shots)
6. Provide triangle rebounding coverage
7. Keep ball out of the paint.

## Description:

In general, the defense will always have a player defending the point by applying pressure or denying the ball from this area of the court. The players will then rotate and/or match-up accordingly.

### **"World Famous" Temple Match-up Zone Rules**

1. Every offensive player should be covered by the nearest defensive player as quickly as possible. The defense must be aware of all 5 offensive players. The defense must know where the offense is at **all** times.
2. The defense should get in all passing lanes. Play between the ball and the man who is in your coverage area. Be "In" and "On the line" in "Up the line" position.
3. The defense should never allow a pass back to the point once the ball has been passed or dribbled



to a wing position. Stop this pass by being on the line - up the line.

4. The defense should force any dribbler to the sideline and then to the baseline. The defense should then stop the ball there, if it can't be stopped sooner.

5. The defense must put pressure on the ball to stop a pass from being entered into the middle of the zone.

6. When a skip or cross-court pass is made, the closest defensive player will cover the receiving offensive player. The defense will then make slide accordingly.

7. On a pass to the high post, the center will cover with the nearest guard doubling down to strip the ball. Forwards should be aware of a pass from the high post to the low post.

8. On a pass to the low post, the closest defensive player to the basket will play low post defense with the nearest defender doubling to strip the ball.

9. When you play a dribbler, stay with them even if the dribbler leaves your coverage area. A teammate may call you off or a double team could occur.

10. On all double teams, the two players on the ball should apply intense pressure without fouling. The remaining defensive players should adjust to play a passing lane with respect to the nearest offensive player. Do not give up an easy pass to an offensive player near the basket. We will allow a long cross-court pass out of any pass made by the offense. We will have time to recover.

11. When the player in your zone cuts to the basket, front the cutter until your teammate calls you off. Then recover back to your area and find a player to cover.

12. Generally, the center will cover any flash cuts in the lane. However, when the center is matched up with a player and the player in your zone flashes, you are responsible for that player.

13. We should always have triangle rebounding. Sometimes the guards are required to fill these key rebounding spots.

# Temple Match-up Zone

February 17, 2009

## Table of Contents

Matchup Slides (6 Plays) .....	2
Rules for Positions (5 Plays) .....	11
Adjustments (5 Plays) .....	21
Teaching point matchup zone (2 Plays) .....	27



# Matchup Slides

## Table of Contents

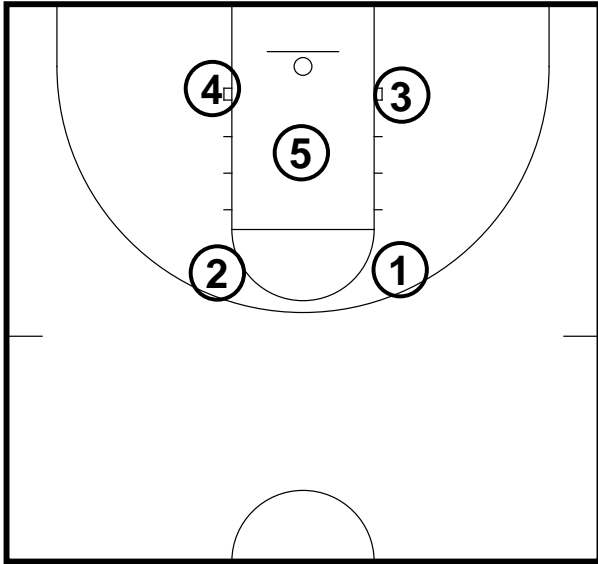
Match-up Zone Slides .....	3
Match-up Zone Slides .....	4
Point vs 2-1-2 .....	7
Point vs. 2-1-2 .....	8
Point vs. 1-3-1 offense .....	9
Point vs. 2-1-2 .....	10

# Matchup Slides

## Match-up Zone Slides

Zone Slides

Frame 1

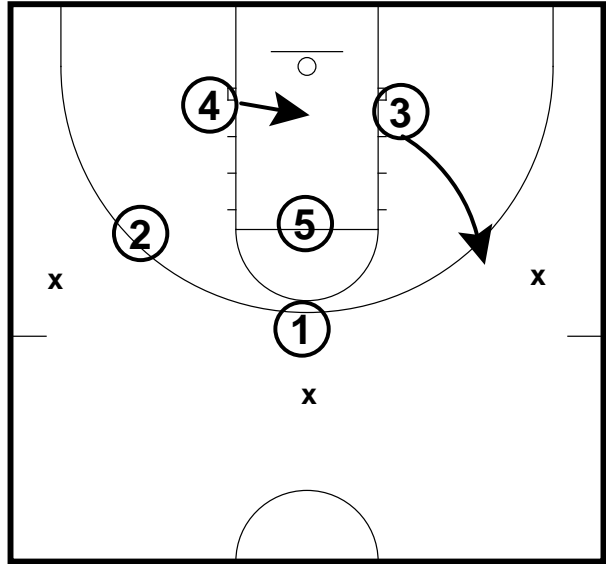


Main Set-up

## Match-up Zone Slides

Zone Slides

Frame 2

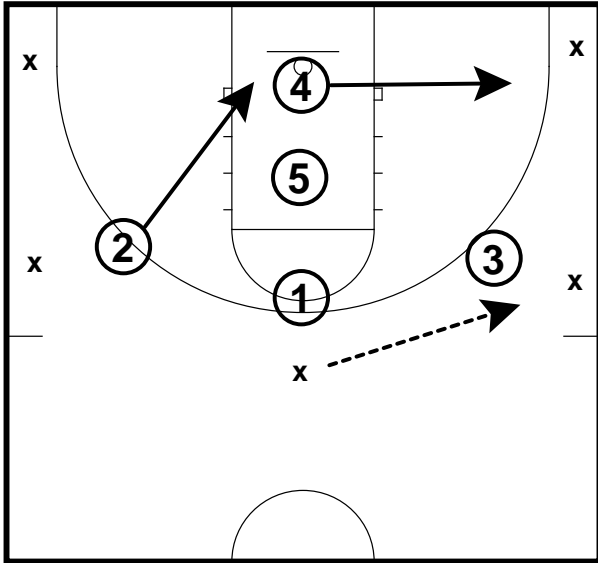


1 will matchup with point guard. 2 will slide to left wing. 3 will slide to right wing. 4 slides to the middle of the lane.

## Match-up Zone Slides

Zone Slides

Frame 3

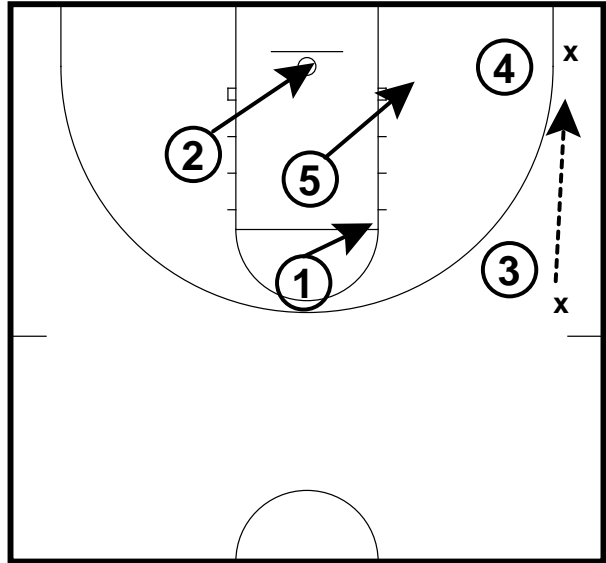


Point guard passes to right wing, 3 slides up. 4 slides out to corner. 2 slides left block.

## Match-up Zone Slides

Zone Slides

Frame 4



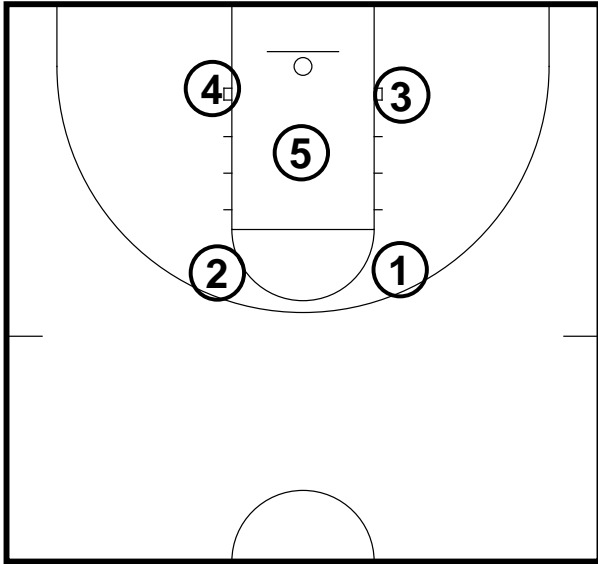
Right Wing passes to corner, 4 slides out to cover the corner. 5 slides to rightside block. 2 slides to the middle of the lane. 1 covers the highpost elbow.

# Matchup Slides

## Match-up Zone Slides

Zone Slides - Vs. Skip Pass

Frame 1

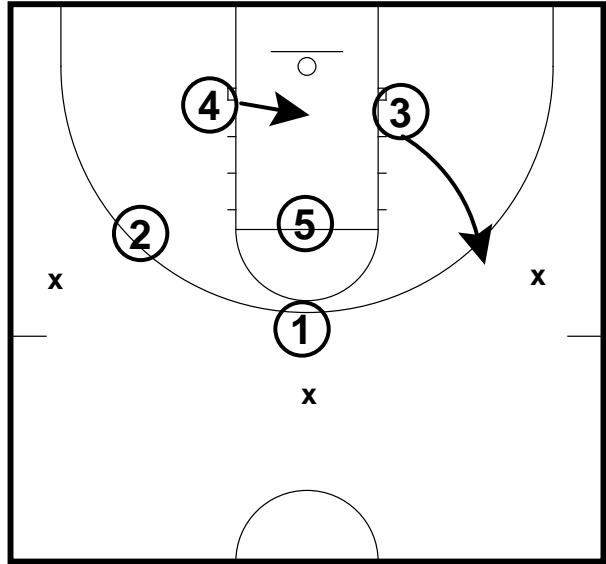


Main Setup: Next 8 frames are versus the skip pass.

## Match-up Zone Slides

Zone Slides - Vs. Skip Pass

Frame 2

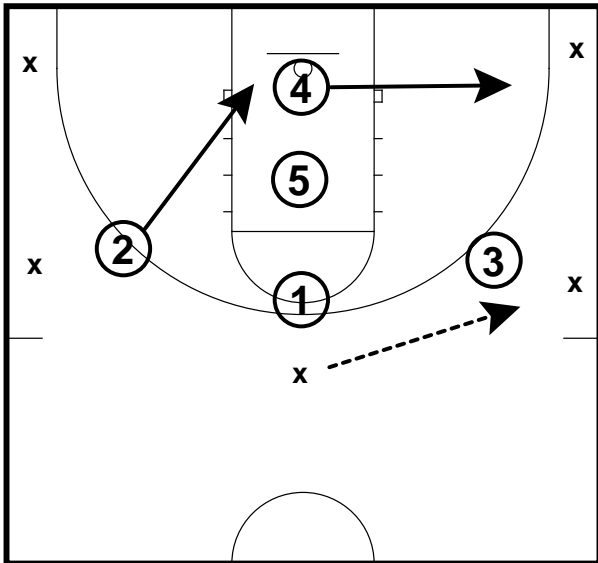


1 will matchup with point guard. 2 will slide to left wing. 3 will slide to right wing. 4 slides to the middle of the lane.

## Match-up Zone Slides

Zone Slides - Vs. Skip Pass

Frame 3

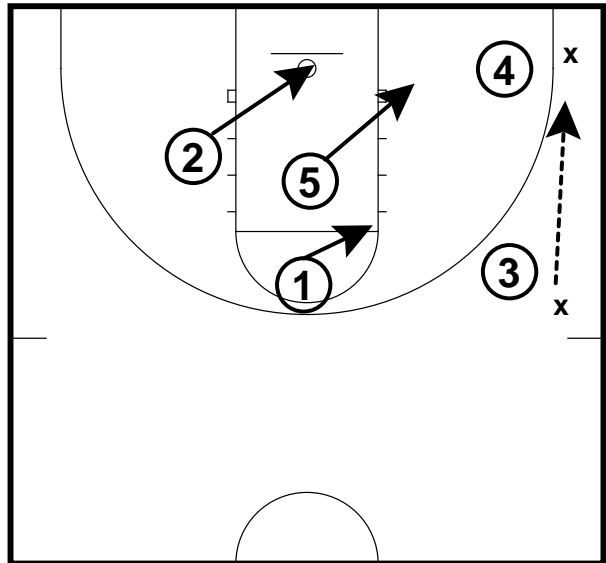


Point guard passes to right wing, 3 slides up. 4 slides out to corner. 2 slides left block.

## Match-up Zone Slides

Zone Slides - Vs. Skip Pass

Frame 4



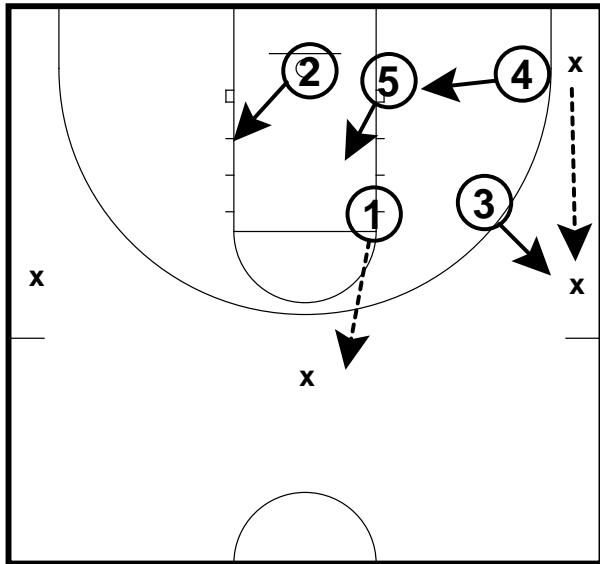
Right Wing passes to corner, 4 slides out to cover the corner. 5 slides to right side block. 2 slides to the middle of the lane. 1 covers the highpost elbow.

# Matchup Slides

## Match-up Zone Slides

Zone Slides - Vs. Skip Pass

Frame 5

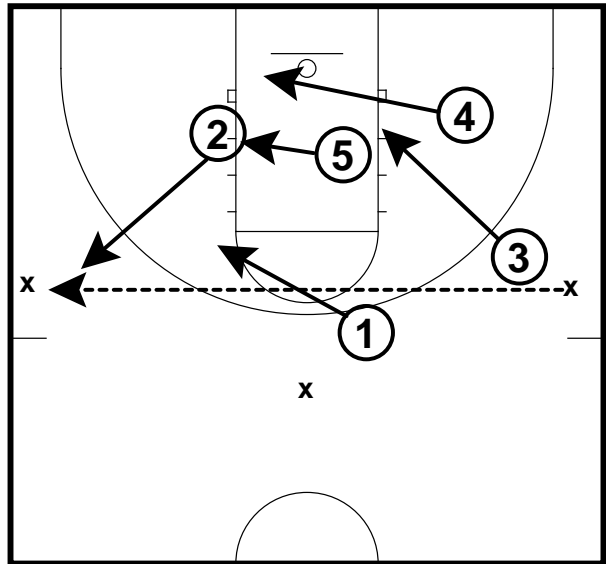


Right Corner passes to wing. 4 slides back down, 3 slide to right wing, 1 covers the point to take away pass. 5 slides to middle 2 slide to offside block.

## Match-up Zone Slides

Zone Slides - Vs. Skip Pass

Frame 6

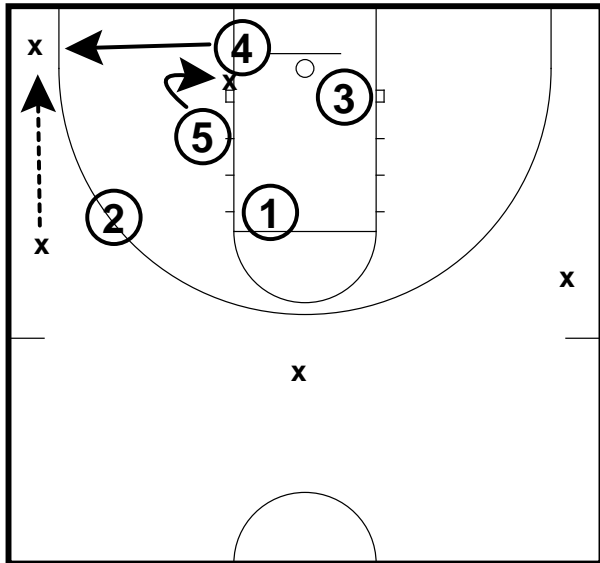


What to do on skip pass: 2 sprints out to left wing. 1 covers elbow. 5 slides in front of post. 4 slides behind post on baseline and 3 covers offside block.

## Match-up Zone Slides

Zone Slides - Vs. Skip Pass

Frame 7

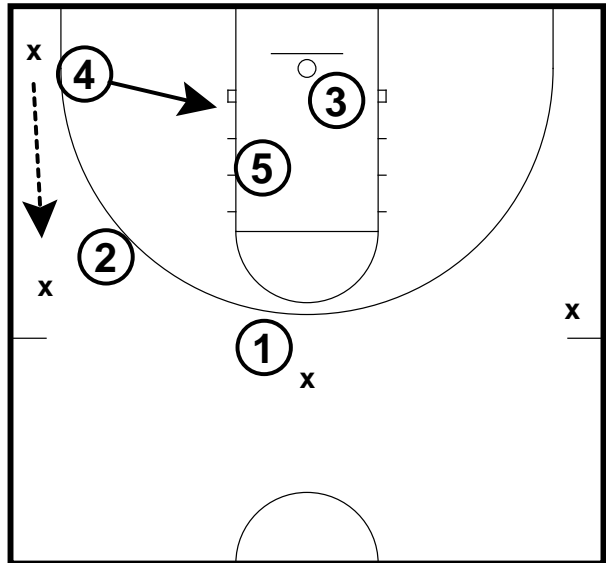


When it goes short corner: 4 sprints to corner on the baseline side. 5 slides in front of post. 1 covers elbow. 2 covers wing.

## Match-up Zone Slides

Zone Slides - Vs. Skip Pass

Frame 8



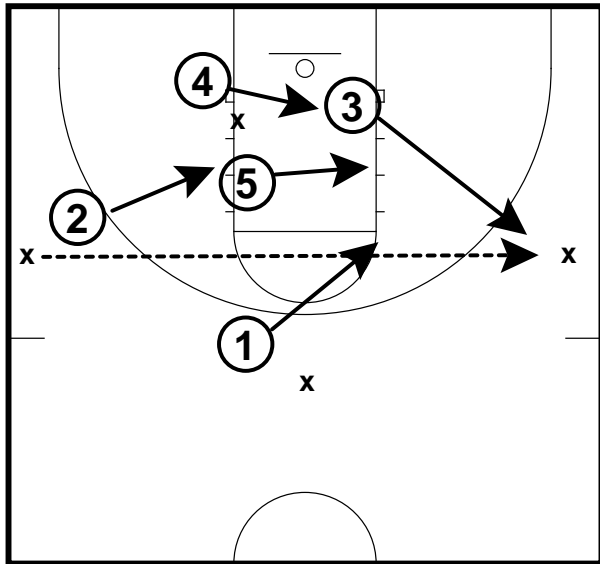
When the ball comes out of the corner, 1 will cut off the point guard. 4 and 5 pinch the post. 3 plays the backside.

# Matchup Slides

## Match-up Zone Slides

Zone Slides - Vs. Skip Pass

Frame 9



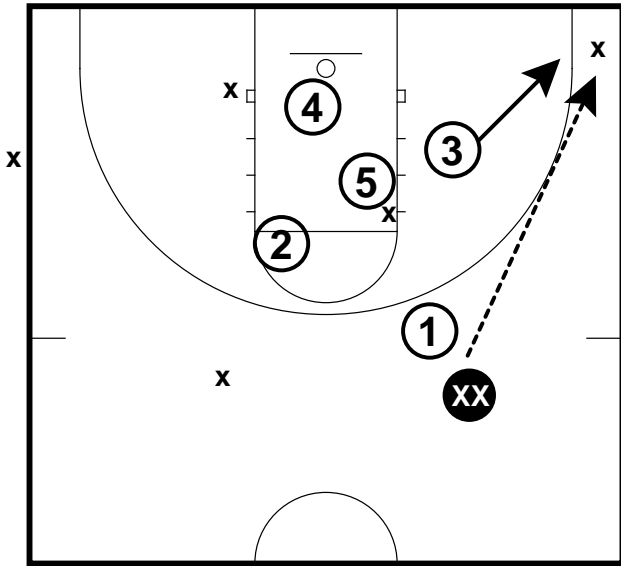
When skip pass happens: 3 sprints out to cover wing. 4 slides to block. 5 sprints to the middle. 2 slides to offside block. 1 covers elbow.

# Matchup Slides

## Point vs 2-1-2

Zone Slides - Corner pass to post

Frame 1

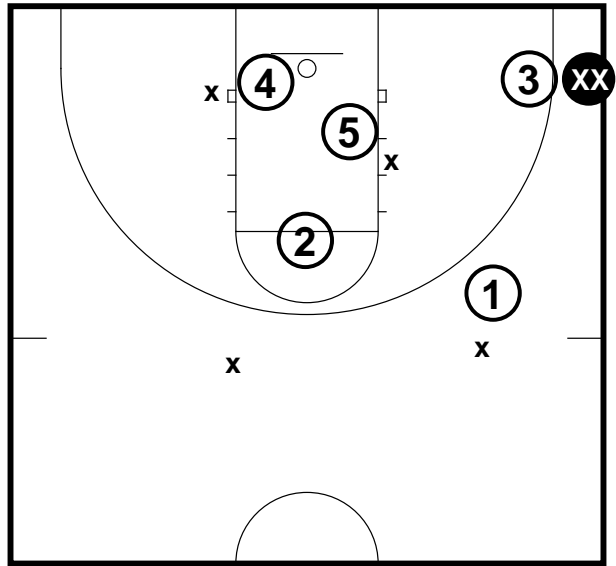


When pass hits the corner: 3 slides out to corner.

## Point vs 2-1-2

Zone Slides - Corner pass to post

Frame 2

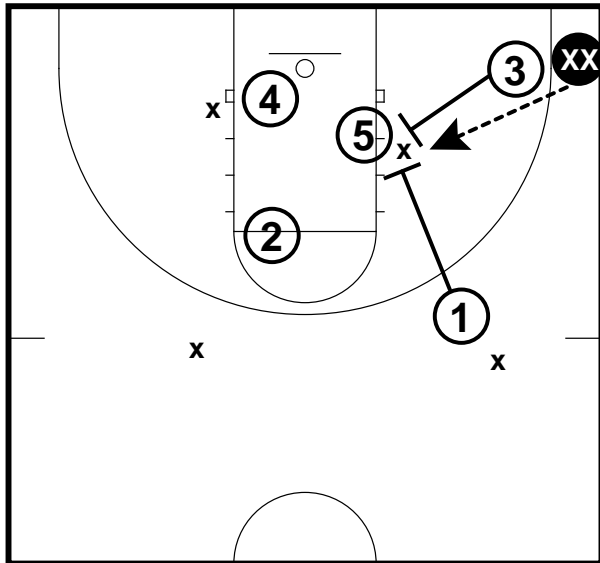


3 pressures the ball in the corner. 5 plays behind the post on baseline side. 2 is covering high post. 1 denies the ball reversal.

## Point vs 2-1-2

Zone Slides - Corner pass to post

Frame 3



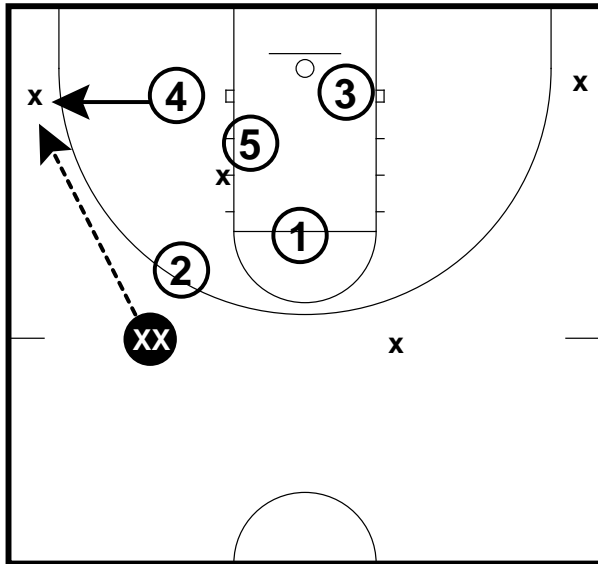
Ball goes into the post: 1, 3 and 5 close to man trap the ball in the post.

# Matchup Slides

## Point vs. 2-1-2

Zone Slides - Pass to the left corner

Frame 1

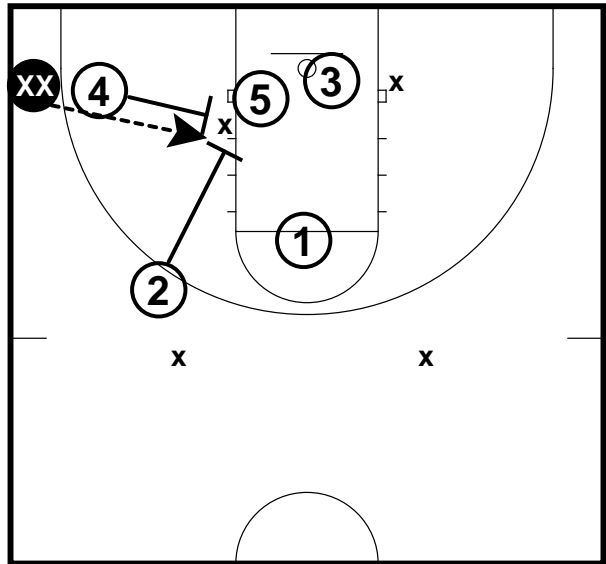


Pass to post on Left corner: 4 slides out to corner and pressures. 2 denies pass out of the corner. 5 slides more baseline side. 1 covers high post.

## Point vs. 2-1-2

Zone Slides - Pass to the left corner

Frame 2



Pass to post: 5 allows pass. 4 and 2 close in to trap the post. 1 protects high post. 3 covers basket.

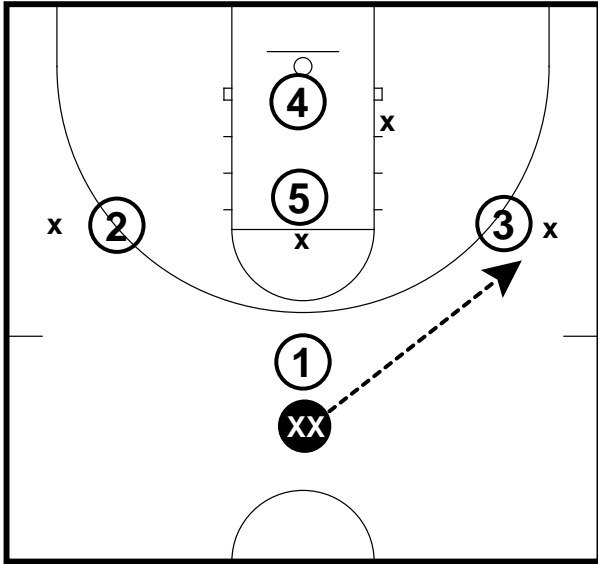


# Matchup Slides

## Point vs. 1-3-1 offense

Zone Slides

Frame 1

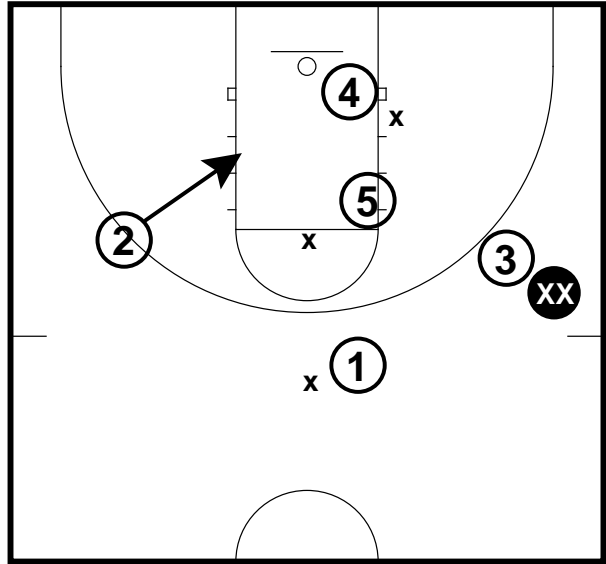


Main Setup against 1-3-1 Offense: point guard passes to right wing.

## Point vs. 1-3-1 offense

Zone Slides

Frame 2

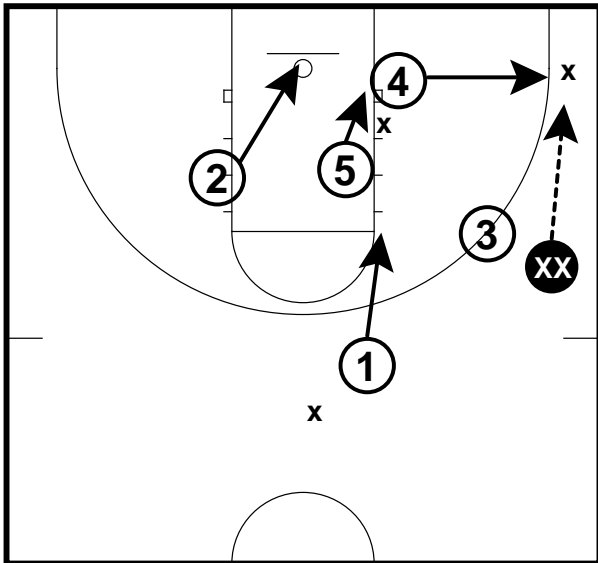


3 pressure the ball on right wing. 1 denies ball reversal. 4 is on baseline side

## Point vs. 1-3-1 offense

Zone Slides

Frame 3



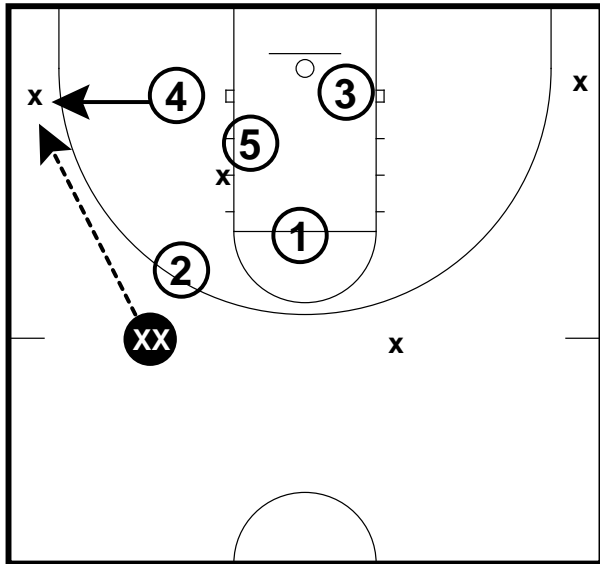
When the ball is passed to the corner: 4 slides out. 3 denies the ball reversal. 5 slides baseline side. 2 protects basket. 1 covers the high post.

# Matchup Slides

## Point vs. 2-1-2

Zone Slides - Pass to the left corner

Frame 1

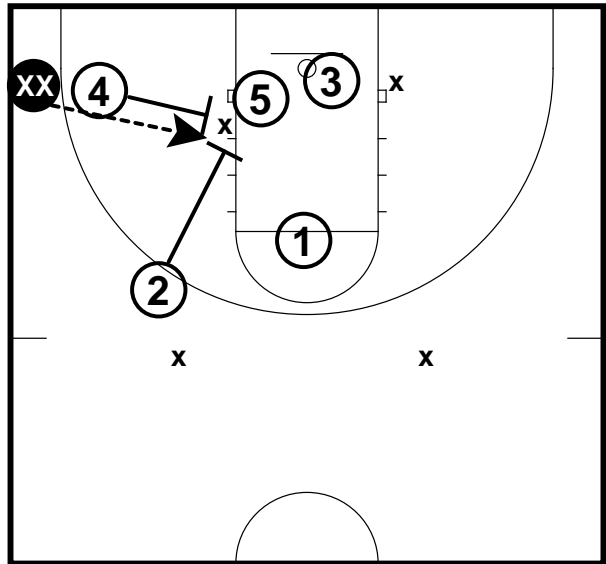


Pass to post on Left corner: 4 slides out to corner and pressures. 2 denies pass out of the corner. 5 slides more baseline side. 1 covers high post.

## Point vs. 2-1-2

Zone Slides - Pass to the left corner

Frame 2



Pass to post: 5 allows pass. 4 and 2 close in to trap the post. 1 protects high post. 3 covers basket.

# Rules for Positions

## Table of Contents

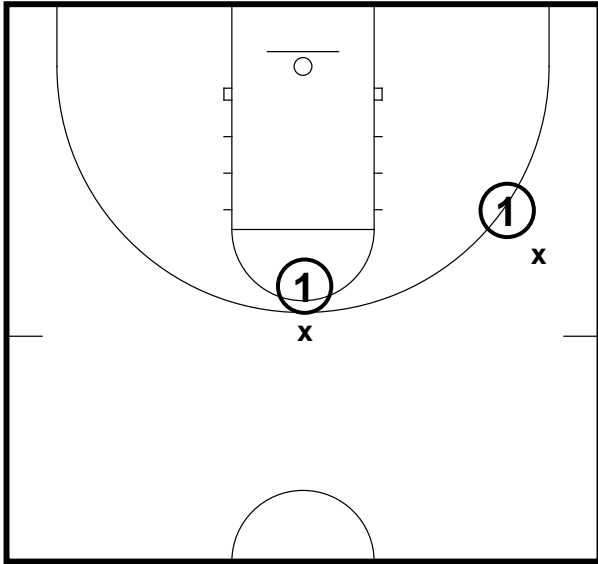
Rules for Positions .....	12
Rules for 2 position .....	14
Rules for 3 Position .....	16
Rules for 4 Position .....	18
Rules for 5 Position .....	20

# Rules for Positions

## Rules for Positions

Zone Slides - 1 rules

Frame 1

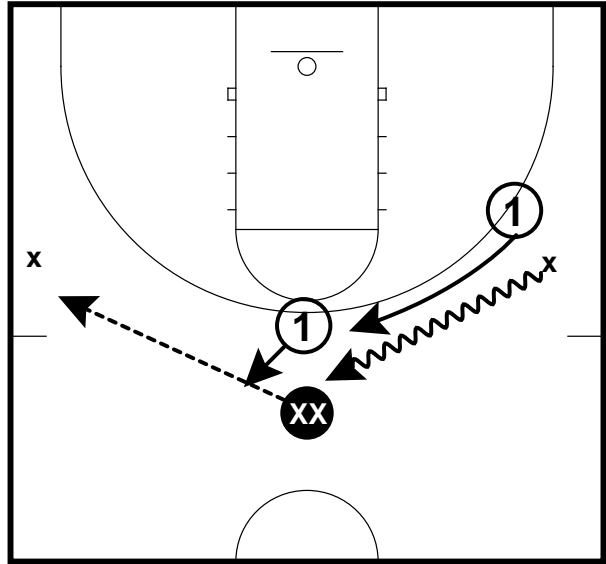


1 plays defense on a dribbler at the point or our left side when the ball crosses mid-court.

## Rules for Positions

Zone Slides - 1 rules

Frame 2

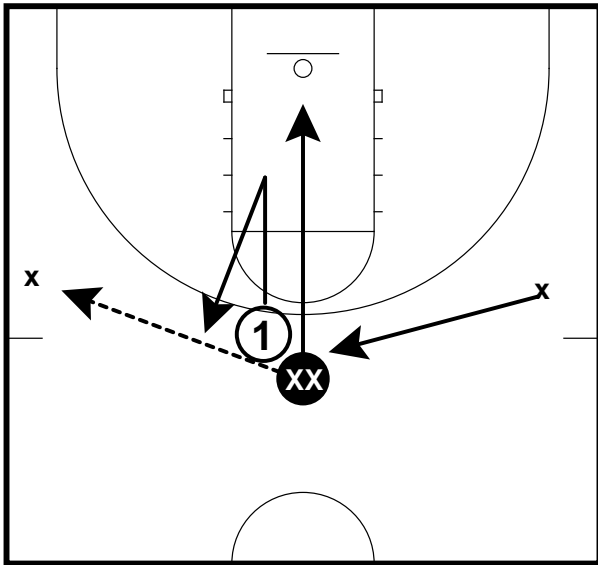


1 plays defense till the ball crosses the mid-line. When at the point, 1 stays in denial position and does not allow a pass back to the point.

## Rules for Positions

Zone Slides - 1 rules

Frame 3

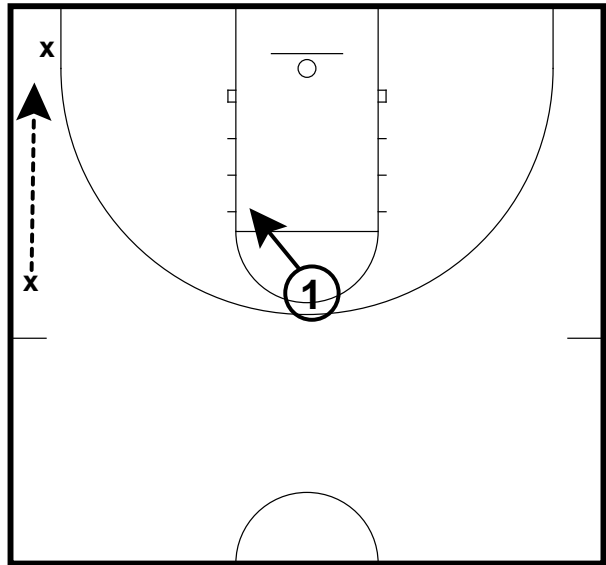


If a player cuts, 1 fronts the cutter and recover back to denial should another offensive player replace the cutter.

## Rules for Positions

Zone Slides - 1 rules

Frame 4



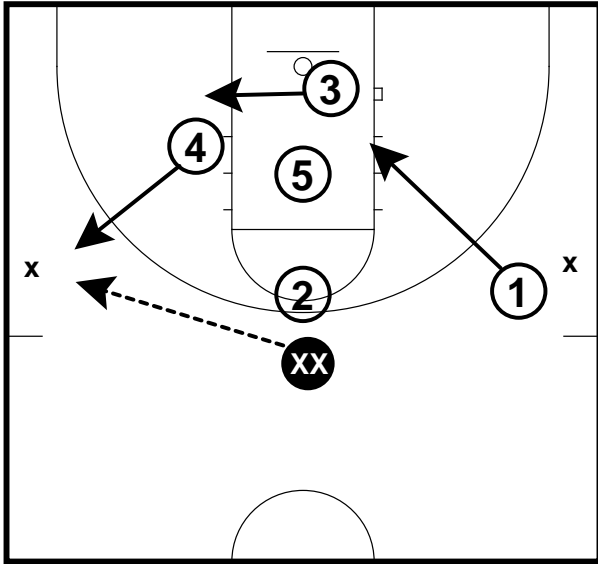
When at the point and the ball is passed to a corner, 1 drops into high post area and match-ups. Double team any pass in post.

# Rules for Positions

## Rules for Positions

Zone Slides - 1 rules

Frame 5



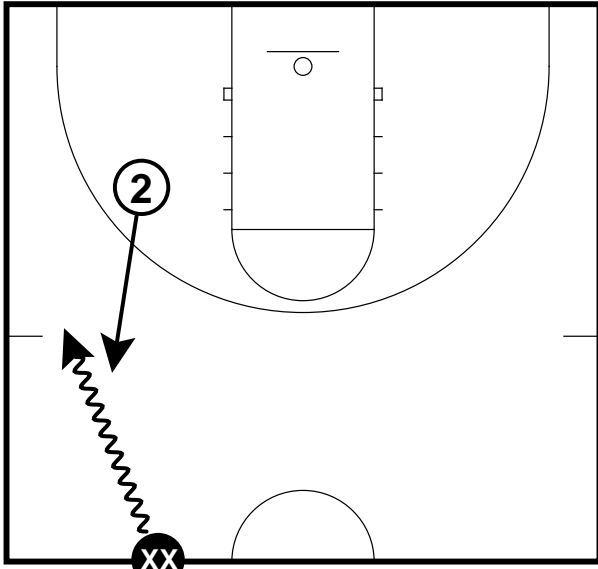
When 1 is on wing coverage, 1 must drop to weakside forward on a pass to opposite wing or corner.

# Rules for Positions

## Rules for 2 position

Zone Slides

Frame 1

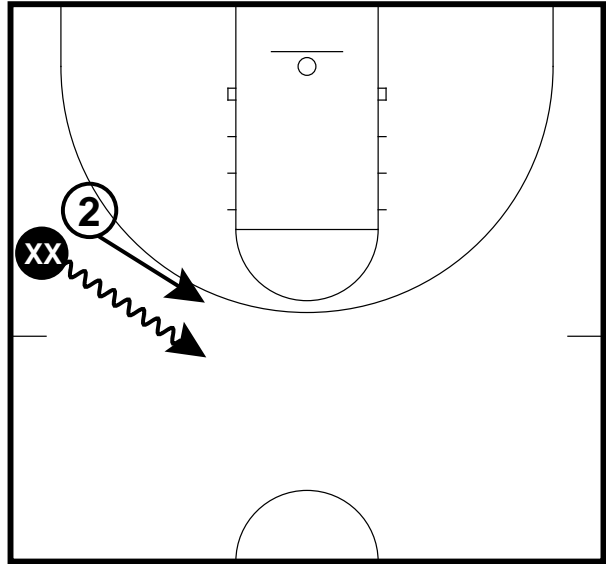


2 plays defense on dribbler on the left side when the ball is crossed the mid-court.

## Rules for 2 position

Zone Slides

Frame 2

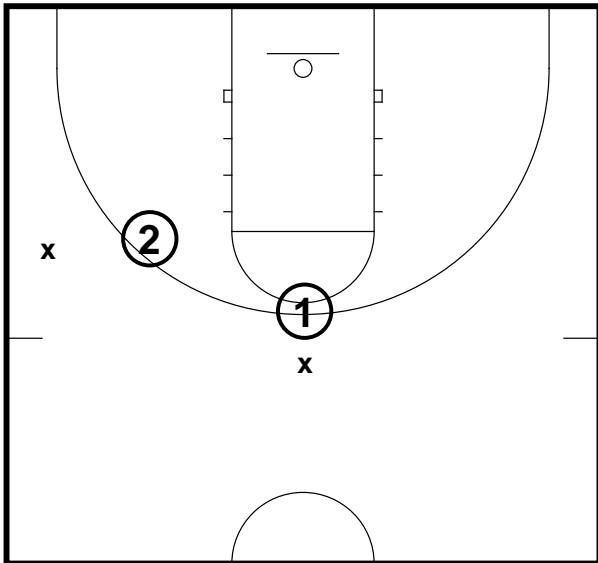


2 plays defense on ball when it is on the left side of the court if it is dribbled to mid-line.

## Rules for 2 position

Zone Slides

Frame 3

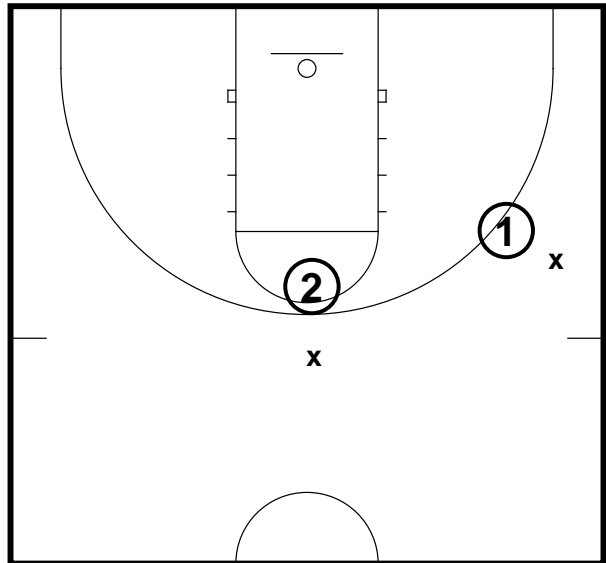


2 always plays the first player to the right of the 1.

## Rules for 2 position

Zone Slides

Frame 4



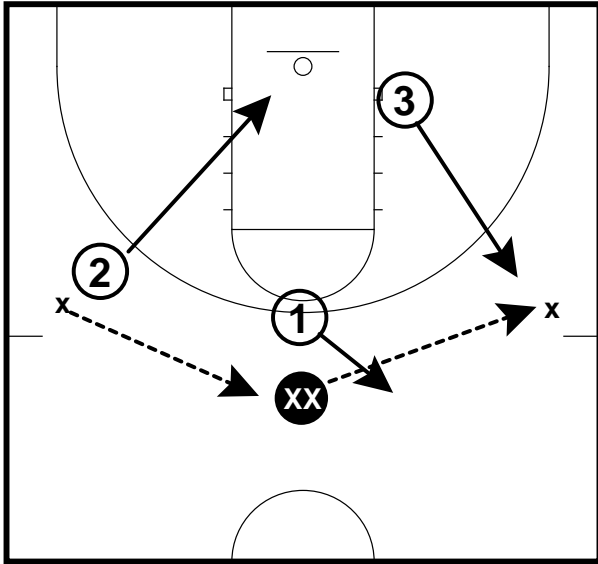
2 always plays the first player to the right of 1. 2 denies any pass back to the point.

# Rules for Positions

## Rules for 2 position

Zone Slides

Frame 5

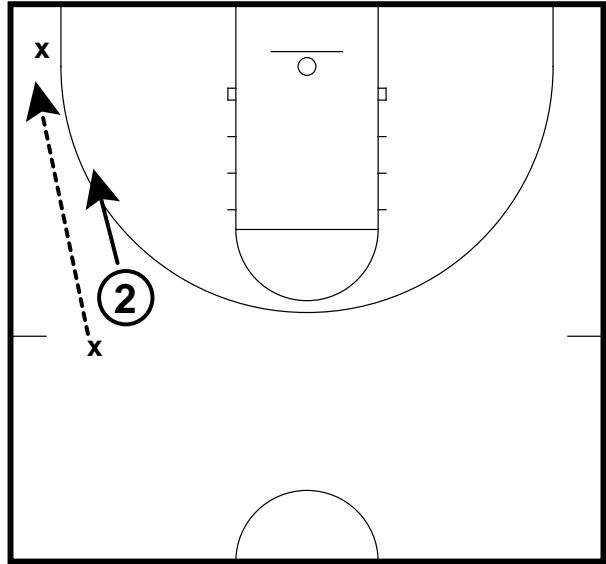


When on wing coverage, 2 drops to weakside forward on a pass to opposite wing or corner.

## Rules for 2 position

Zone Slides

Frame 6

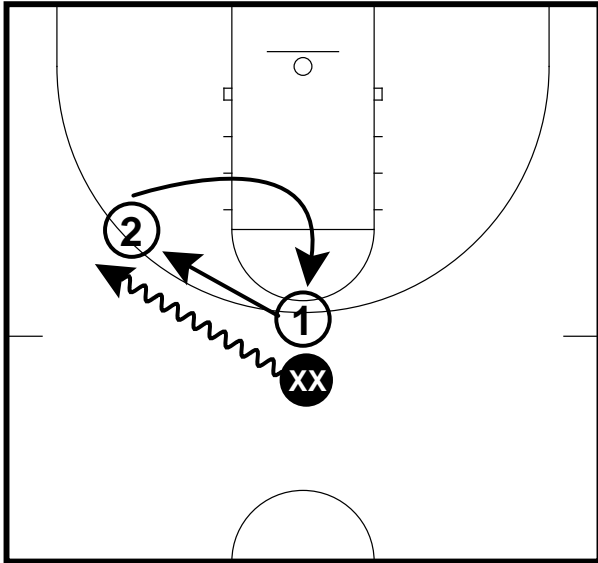


When on wing coverage, and a pass is made from wing to corner ballside, 2 drops toward ball and stays on the line - up the line with player in your zone.

## Rules for 2 position

Zone Slides

Frame 7

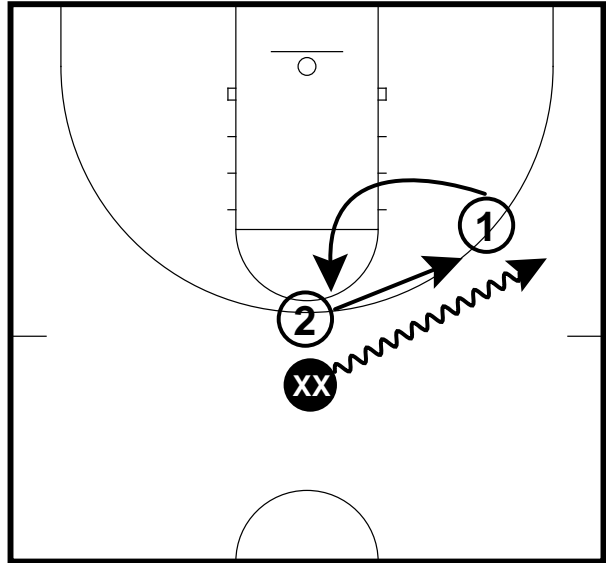


On a dribble from point to wing, the defense will stay with man. The weakside defender will switch sides.

## Rules for 2 position

Zone Slides

Frame 8



On a dribble from point to wing, the defense will stay with man. The weakside defender will switch sides.

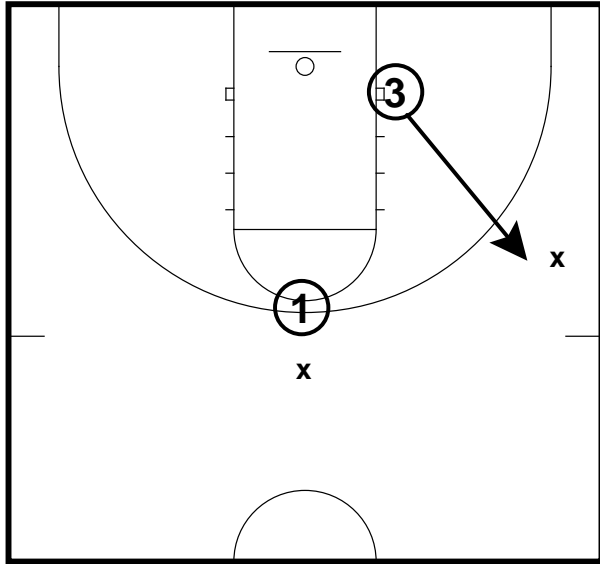


# Rules for Positions

## Rules for 3 Position

Zone Slides

Frame 1

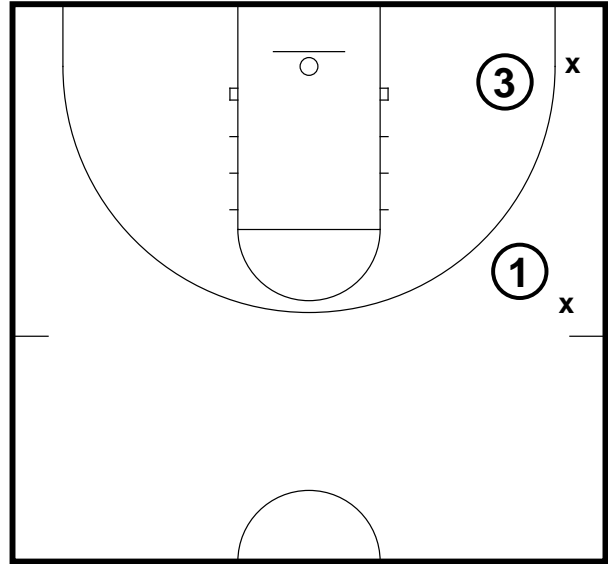


3 plays defense on first player to the left of 1.

## Rules for 3 Position

Zone Slides

Frame 2

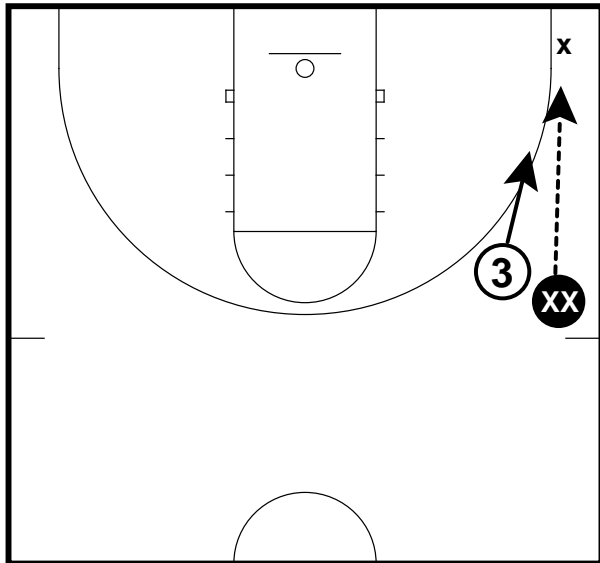


3 plays defense on the first player to the left of 1.

## Rules for 3 Position

Zone Slides

Frame 3

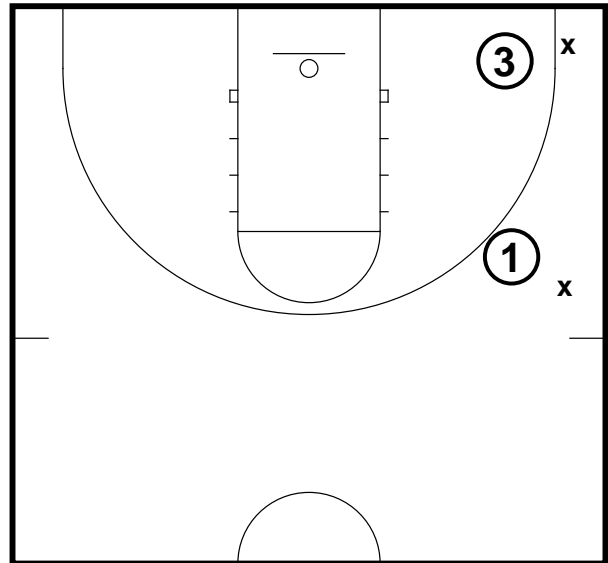


On a ballside pass from the wing to the corner, 3 will play on the line-up the line with a player in the zone.

## Rules for 3 Position

Zone Slides

Frame 4



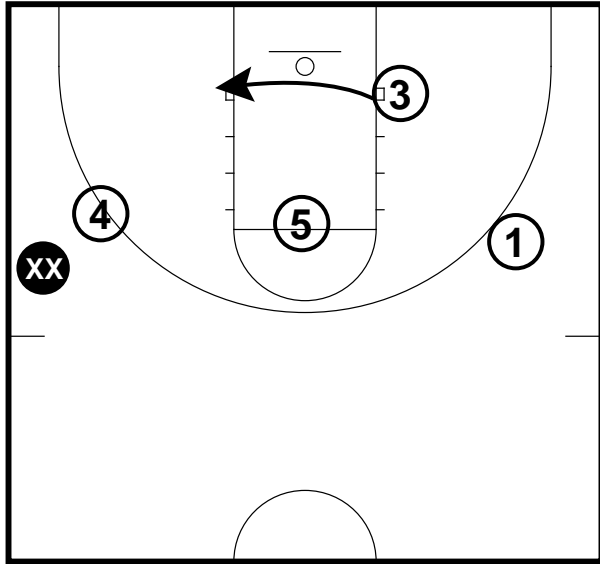
When 1 plays the wing, 3 will be in the forward position.

# Rules for Positions

## Rules for 3 Position

Zone Slides

Frame 5

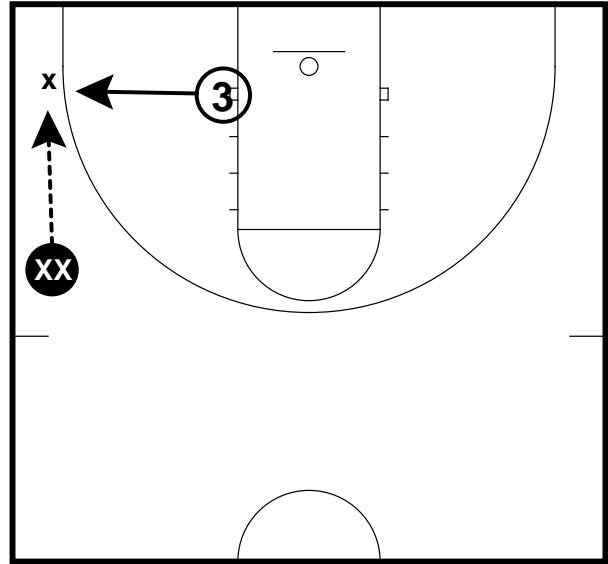


When 3 is a forward, and 4 is in wing coverage, 3 must slide behind 5 similar to the back of a 1-3-1 zone. 3 would play low post defense.

## Rules for 3 Position

Zone Slides

Frame 6



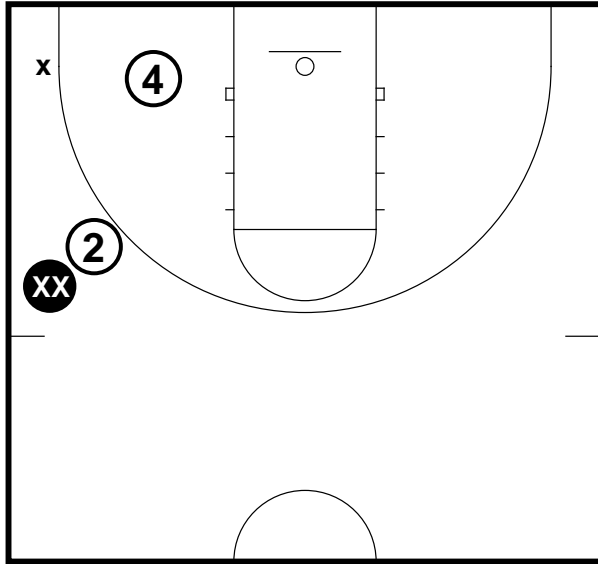
On a pass to the corner, 3 would now hustle to cover that player.

# Rules for Positions

## Rules for 4 Position

Zone Slides

Frame 1

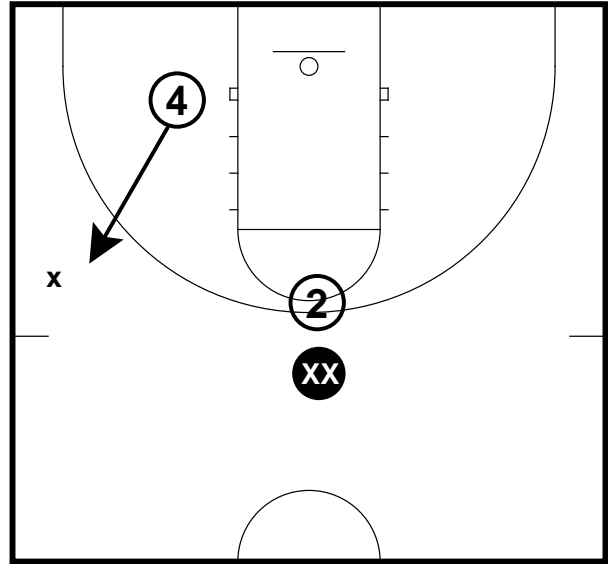


4 plays defense on the first player to the right of 2.

## Rules for 4 Position

Zone Slides

Frame 2

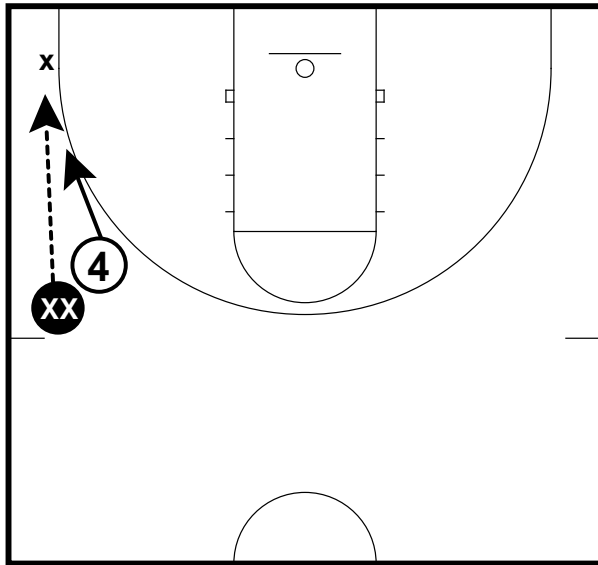


4 plays defense on the first player to the right of 2.

## Rules for 4 Position

Zone Slides

Frame 3

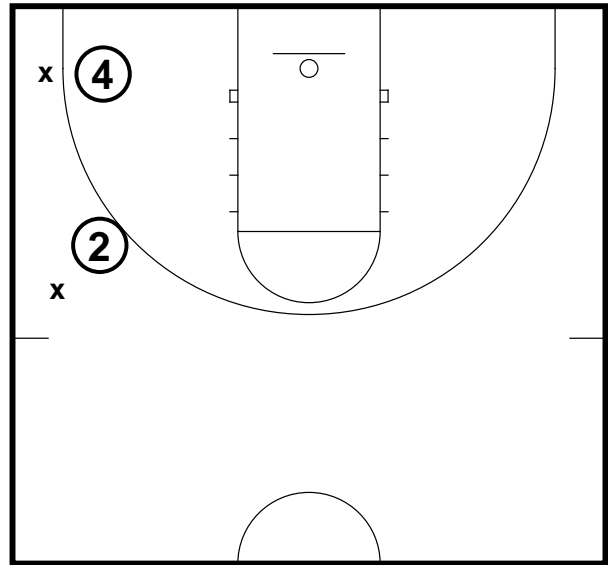


On a ballside pass from the wing to the corner, 4 will play on the line. Up the line with a player in the zone.

## Rules for 4 Position

Zone Slides

Frame 4



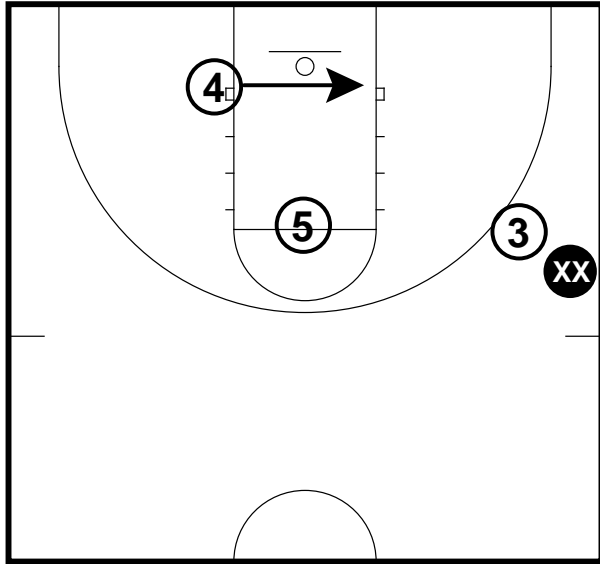
When 2 plays a wing, 4 will be in the forward position.

# Rules for Positions

## Rules for 4 Position

Zone Slides

Frame 5

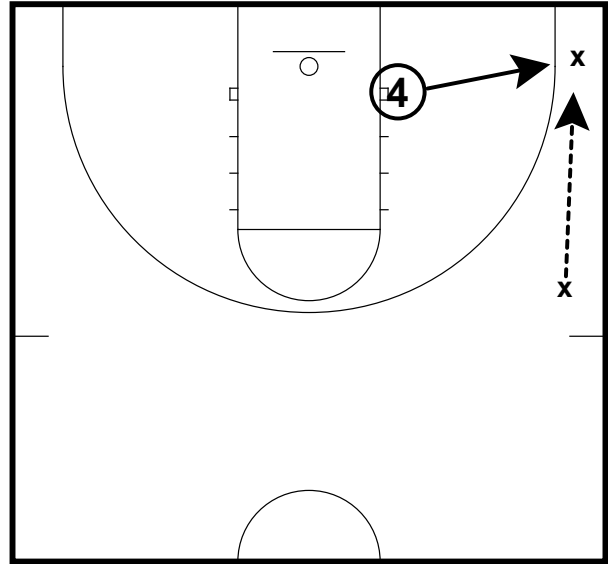


When 4 is a forward, and 3 is in wing coverage, 4 must slide behind 5 similar to the back of a 1-3-1 zone. 4 would play low post defense.

## Rules for 4 Position

Zone Slides

Frame 6



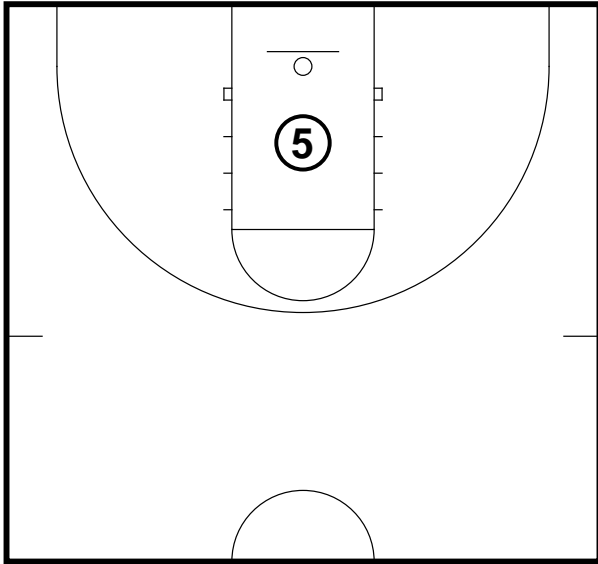
On a pass to the corner, 4 would now hustle to cover that player.

# Rules for Positions

## Rules for 5 Position

Zone Slides

Frame 1

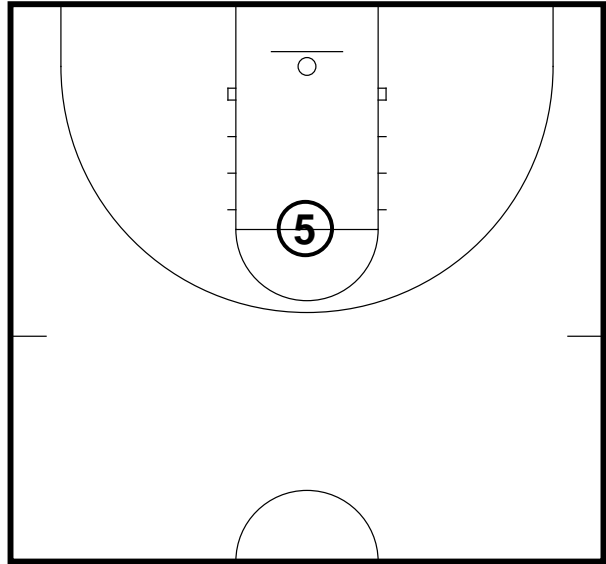


5 will play defense in the paint from high post to low post.

## Rules for 5 Position

Zone Slides

Frame 2

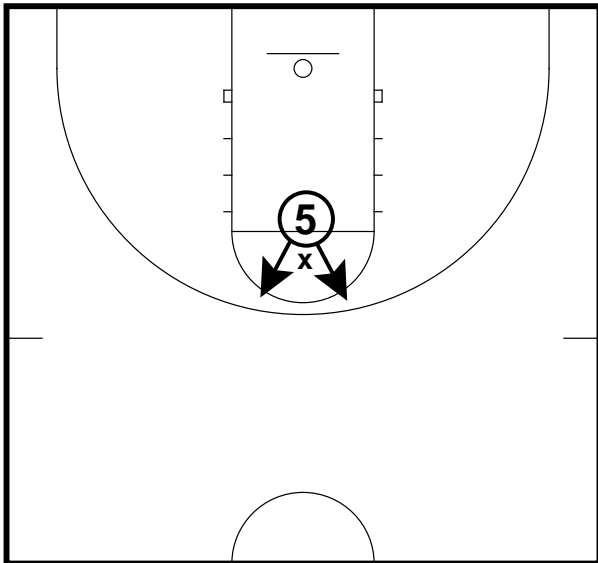


5 will always match-up with high post at the start of each defensive play.

## Rules for 5 Position

Zone Slides

X Frame 3

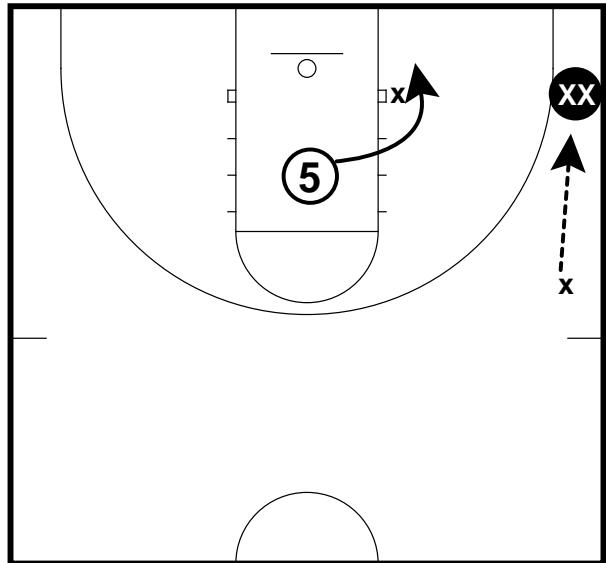


Depending on the ability of high post, we may deny pass. Most of the time, we will not allow pass into high post. Do this by playing tight to the offensive player.

## Rules for 5 Position

Zone Slides

Frame 4



On a pass to the corner, 5 slides toward the ball. Keep eyes open for any cutters or post players to front or deny ball. If there is a low post play low post defense.

# Adjustments

## Table of Contents

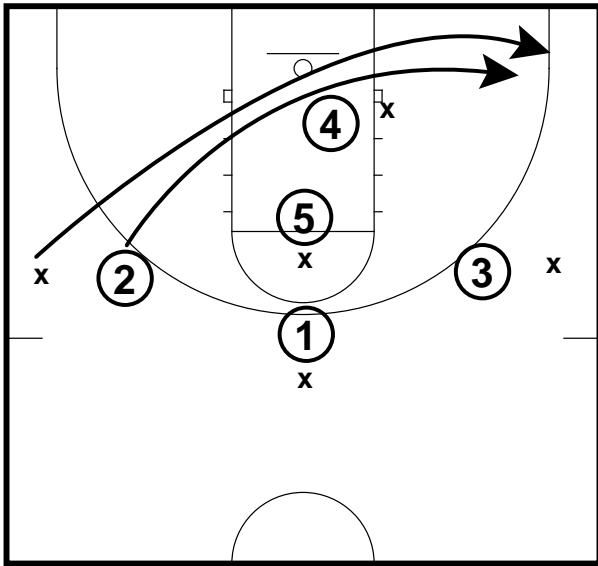
Adjustments vs. overload .....	22
No high post .....	23
Trap in Corner .....	24
Wing Trap .....	25
Skip Pass from wing trap .....	26

# Adjustments

## Adjustments vs. overload

Adjustments for Zone

Frame 1



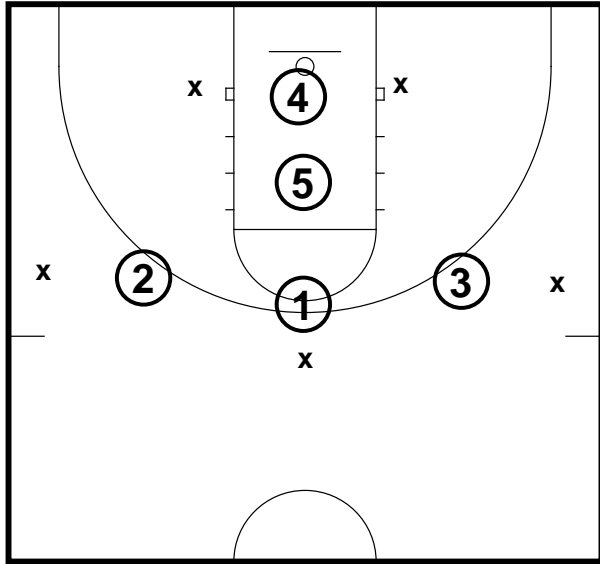
On any overload, if the position's man goes on an overload then that position will go with them.



# Adjustments

## No high post Adjustments for Zone

Frame 1

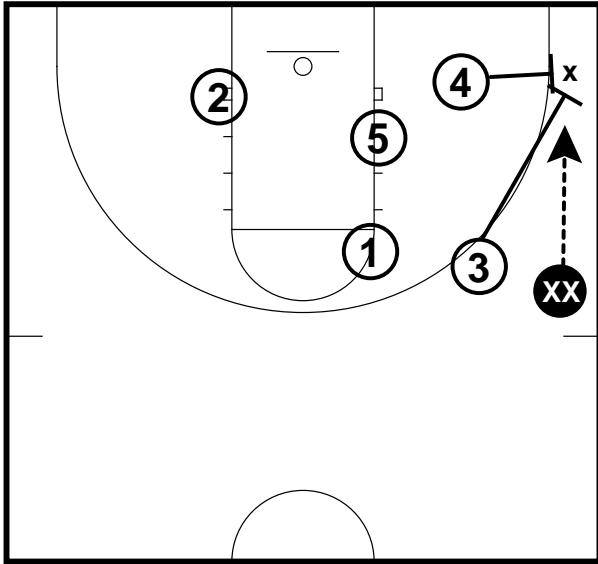


No high post, 5 drops to basket, 4 plays ballside.

# Adjustments

## Trap in Corner Adjustments for Zone

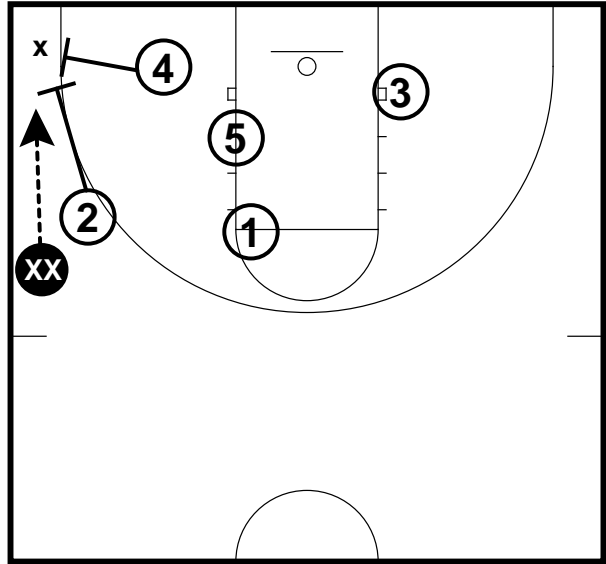
Frame 1



Trap in the corner, 3 and 4 traps the corner on the right side.

## Trap in Corner Adjustments for Zone

Frame 2

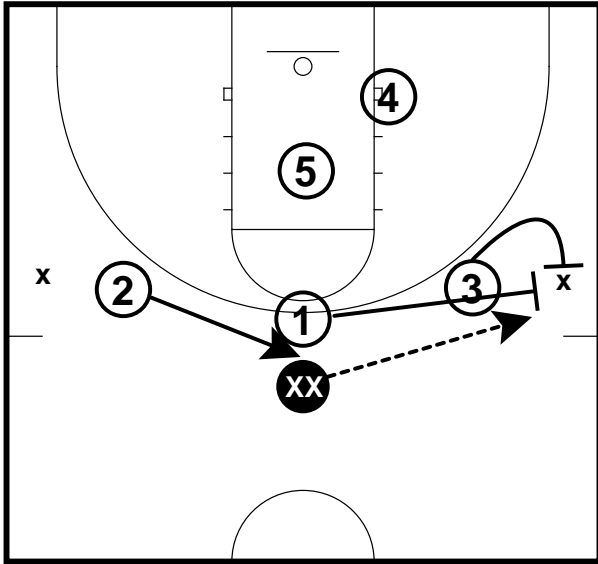


Trap in Corner, 2 and 4 trap the corner on the left side.

# Adjustments

## Wing Trap Adjustments for Zone

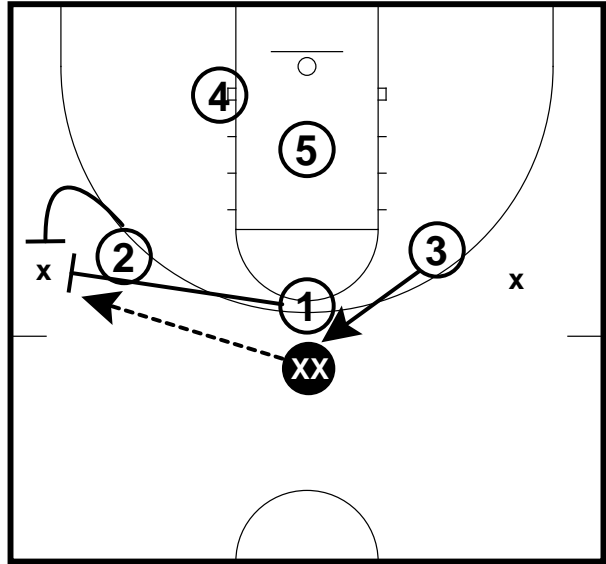
Frame 1



1 and 3 trap the right side and 2 goes to the point.

## Wing Trap Adjustments for Zone

Frame 2



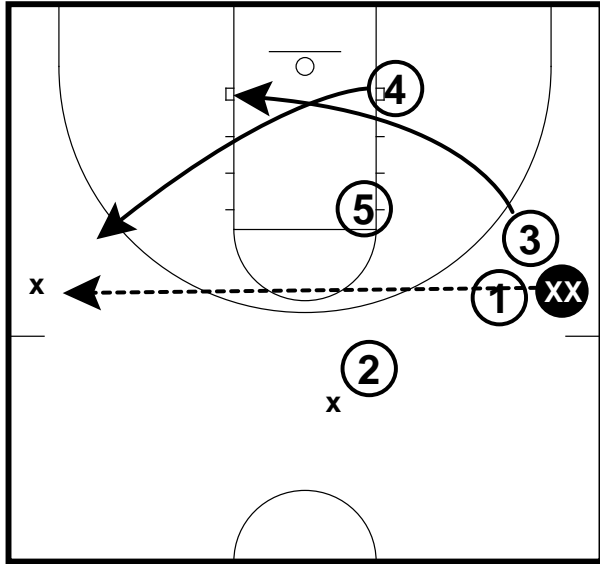
1 and 2 trap the left side and 3 goes to the point.

# Adjustments

## Skip Pass from wing trap

Adjustments for Zone

Frame 1

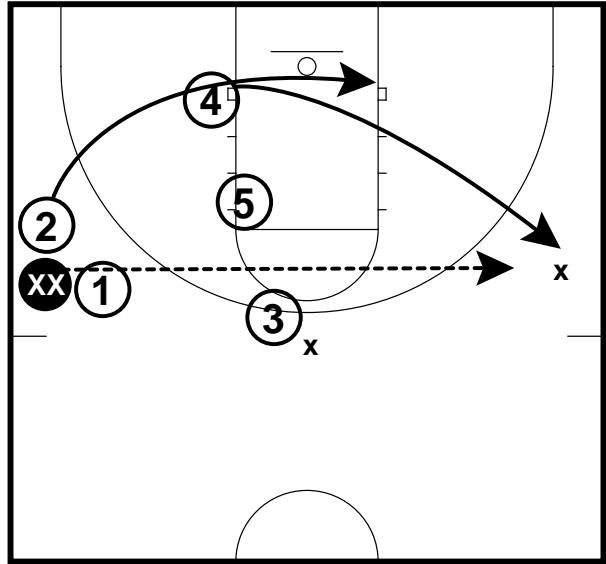


4 is the logical player to guard skip from trap if 2 goes to point. 3 must rotate down.

## Skip Pass from wing trap

Adjustments for Zone

Frame 2



4 is the logical player to guard skip from wing trap if 3 goes to the point. 2 must rotate down.

# Teaching point matchup zone

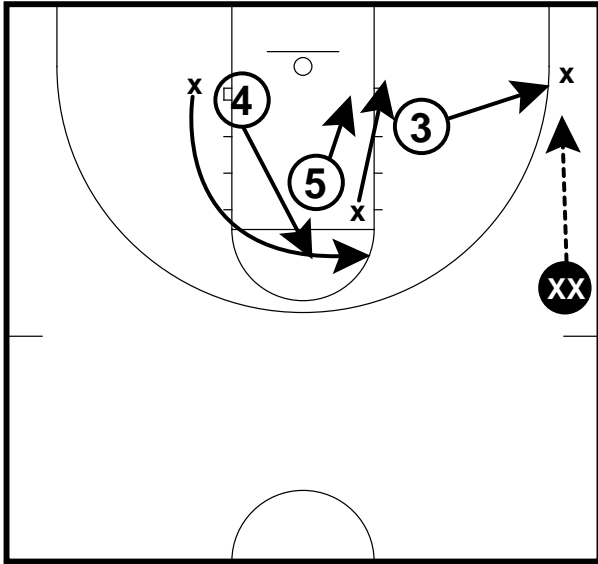
## Table of Contents

Teaching part .....	28
Weakside Rotation .....	29

# Teaching point matchup zone

## Teaching part

Zone Slides - 4 on 3 defending flash out with  
Frame 1



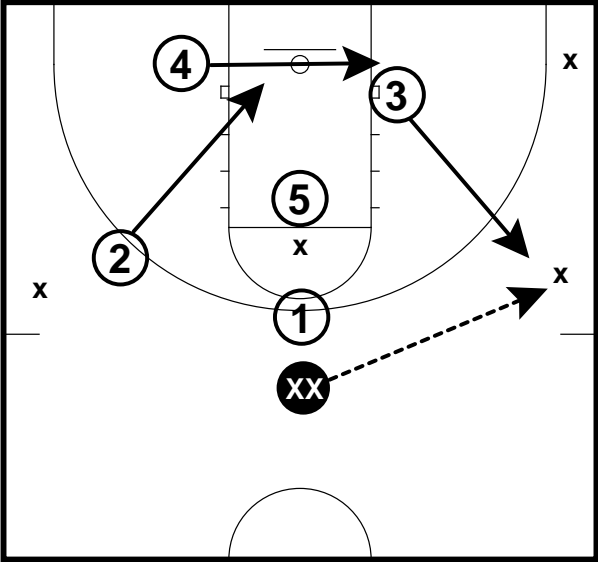
4 on 3 defending flash out with center  
occupied.

Teaching point matchup zone

Weakside Rotation

Zone Slides

Frame 1



5 on 5 Weakside Rotation



# Teaching the "World Famous" Temple Match-up Zone

## 1. Cover Roles

## 2. Whole Method

A. Walk through roles (5 on 0)

B. 5 on 5 vs.

1. 1-2-2 offense
2. 1-3-1 offense
3. 2-1-2 offense
4. Motion offense
5. 1-4 offense

## 3. Part Method

A. 2 on 2 Guards

B. 3 on 4 Guard - Forward

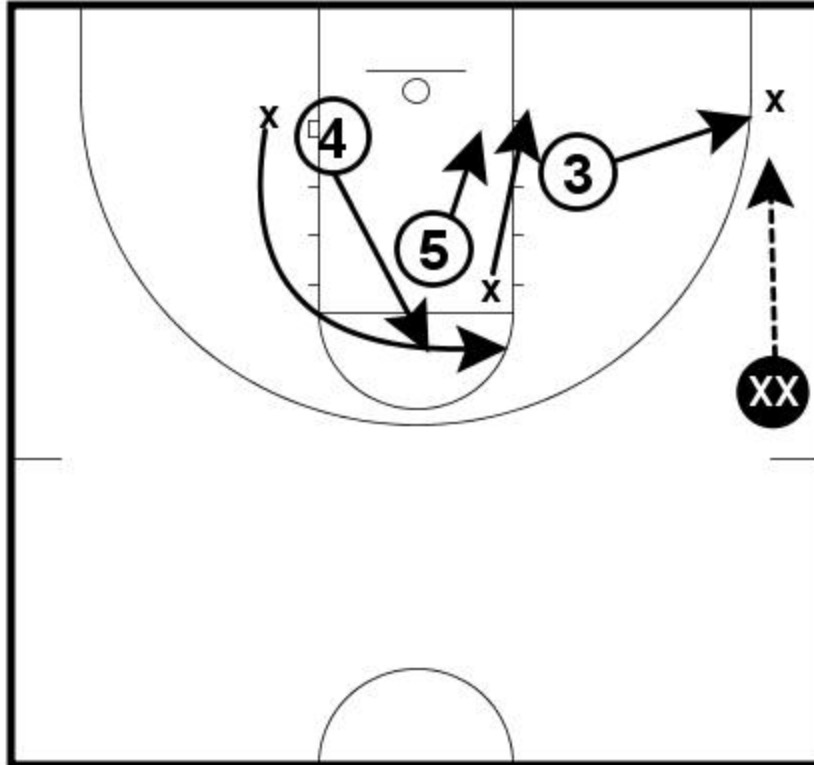
C. 4 on 4

1. One offensive player on baseline
2. 1 point guard
3. 2 wings

D. 4 on 3 defending flash out with center occupied

# Teaching part

Zone Slides - 4 on 3 defending flash out with  
Frame 1



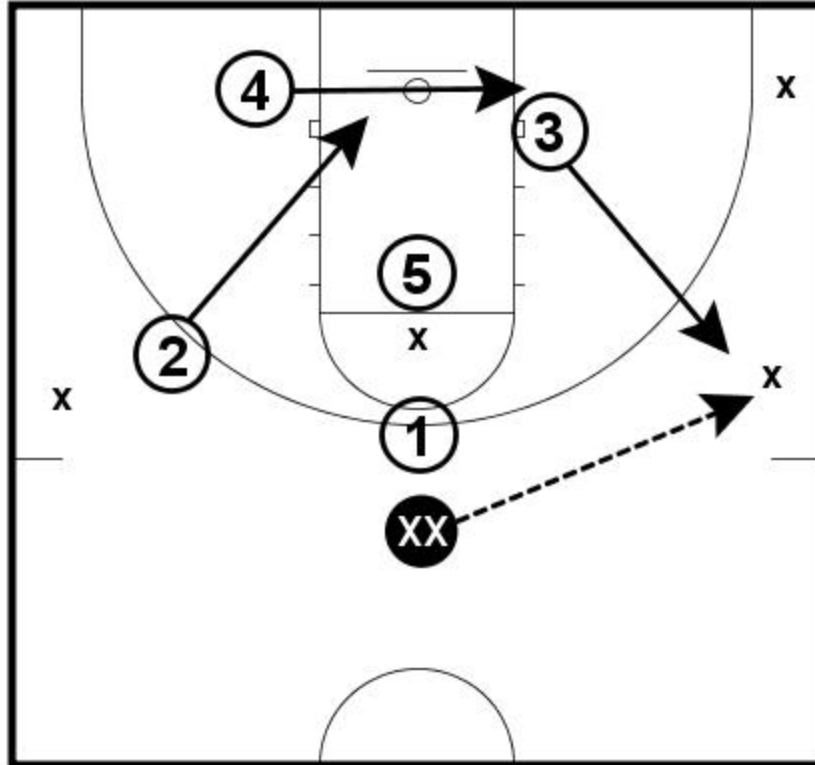
4 on 3 defending flash out with center occupied.

E. 5 on 5 Weak sides Rotation

# Weakside Rotation

Zone Slides

Frame 1



5 on 5 Weakside Rotation

# **"World Famous" Temple Match-up Zone Ebook**

**Designed and compiled by**

**Men's Basketball HoopScoop**

**(Click on our link to go to our Basketball  
Coaching Website)**

**Basketball Diagramming Software by Fast Model**

**(Click on our link to go to our Website)**