

DEFENSE VS. OUT OF BOUNDS SETS

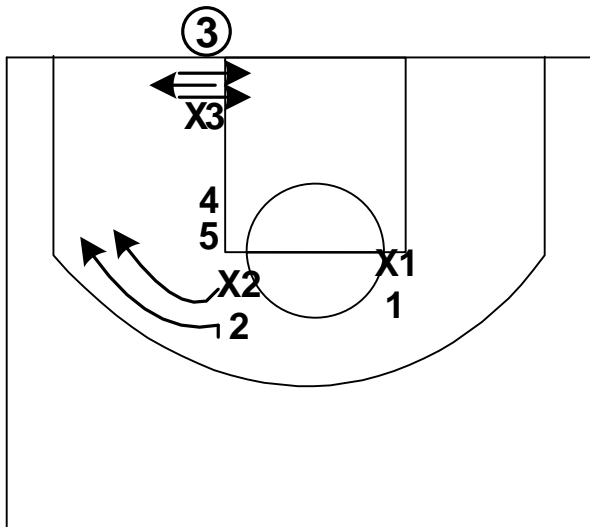
1. TRACK THE SHOOTER

OUT OF BOUNDS DEFENSIVE CONCEPT WHERE THE MAN GUARDING THE INBOUNDER WILL TRACK THE PATH OF THE CUTTER TO THE CORNER OR HIGH POST.

WE TRACK TO PREVENT, OR DELAY, THE CORNER OR HIGH POST CATCH. BIGS HAVE NO STUNT RESPONSIBILITIES. THEIR JOB IS TO DEFEND THEIR OWN MAN AND PREVENT SLIPS TO THE BASKET ESPECIALLY ON BASELINE OB PLAYS.

ALL PLAYERS HAVE CONTACT WITH THEIR MAN BEFORE THE INBOUNDER RECEIVES THE BALL FROM THE OFFICIAL.

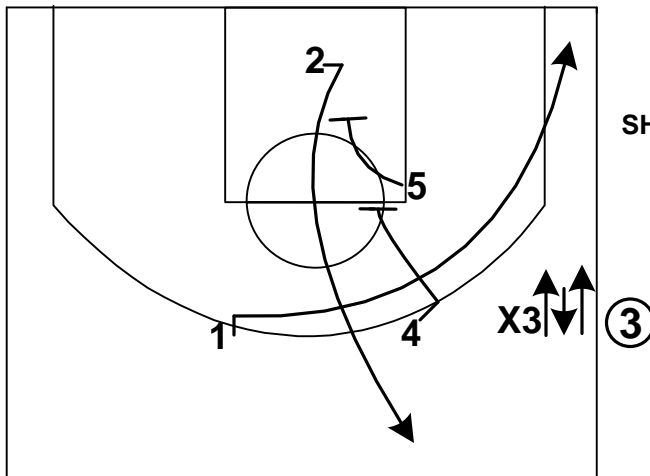
BASELINE



BASELINE OUT OF BOUNDS =

PROTECT BASKET, THEN TRACK SHOOTER TO THE CORNER, THEN PROTECT THE BASKET AGAIN.

SIDELINE

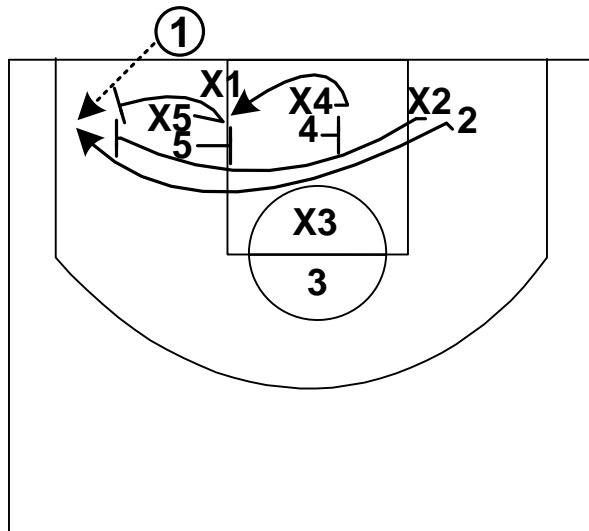


SIDELINE OUT OF BOUNDS =

PROTECT CORNER, THEN TRACK SHOOTER TO THE HIGH POST OR CORNER, THEN BACK TO CORNER.

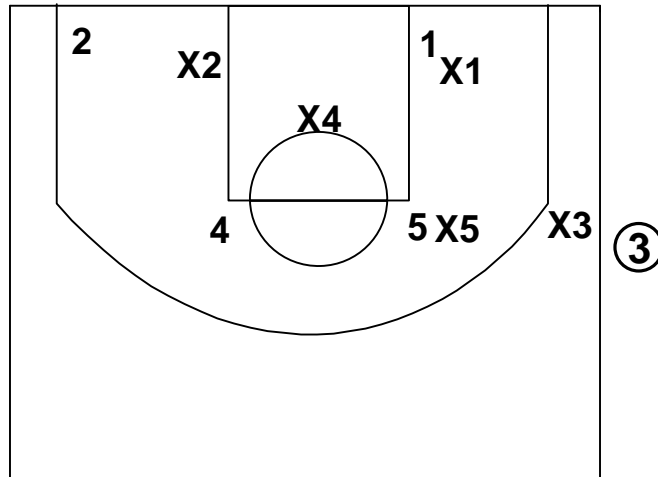
2. BLITZ THE CORNER CATCH

TO TAKE AWAY STRONGSIDE CORNER OPTION AWAY FROM GREAT SHOOTER...WE CAN BLITZ THE CATCH WITH THE BIG DEFENDING THE LAST SCREENER.



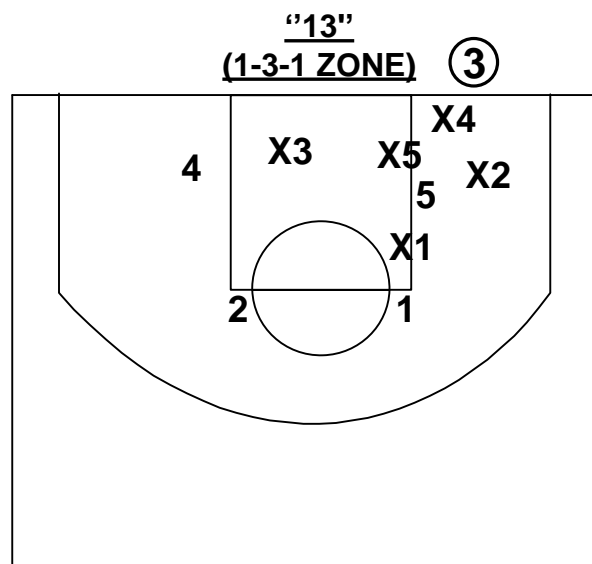
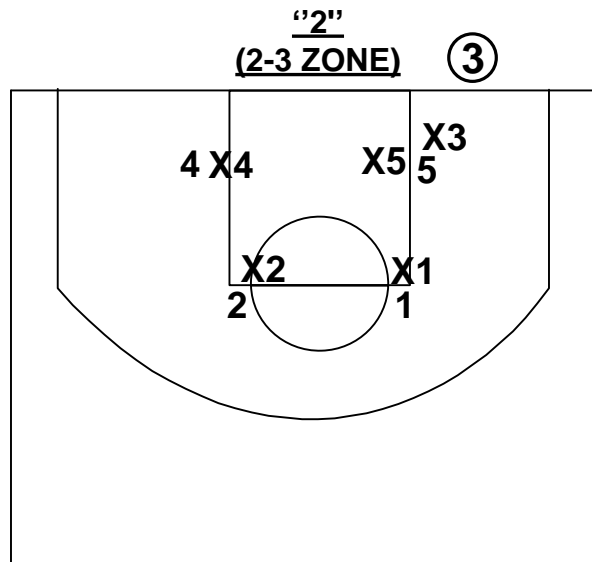
3. FACE TO FACE (SOB)

A CONCEPT TO TAKE AWAY ENTRY TO BIG ON STRONG SIDE ELBOW AND PREVENT CORNER P/R WITH POINT GUARD.



X5 WILL FULL DENY ENTRY TO ELBOW.
X1 WILL FULL DENY POINT GUARD BREAKING
TO THE CORNER. X4 WILL ZONE THE LANE
AND TAKE AWAY ANYTHING OVER THE TOP.

4. ZONE



SHORT CLOCK DEFENSE.