

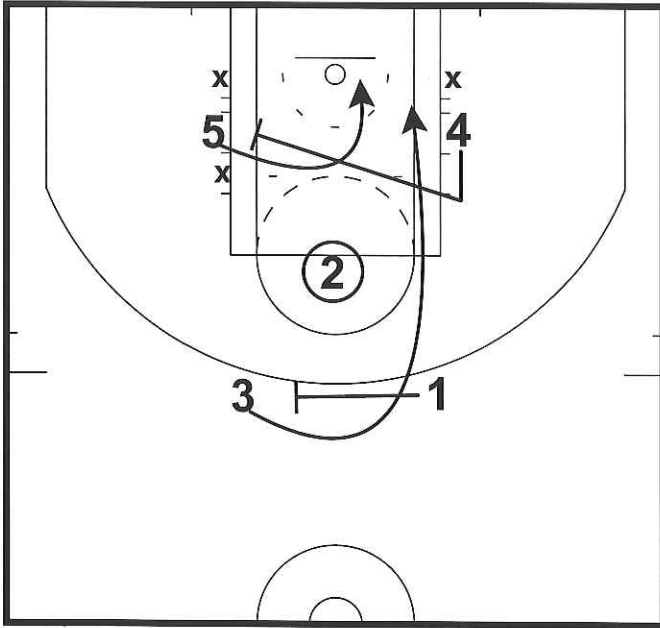
Special Situations

Table of Contents

INT Miss on FT	23
Jump Ball	23
Touchdown	24
Touchdown 3/4	25
Touchdown Direct Low Shot Clock	25

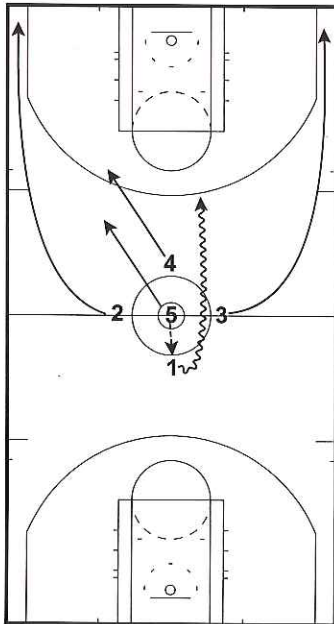
Special Situations

INT Miss on FT
Frame 1



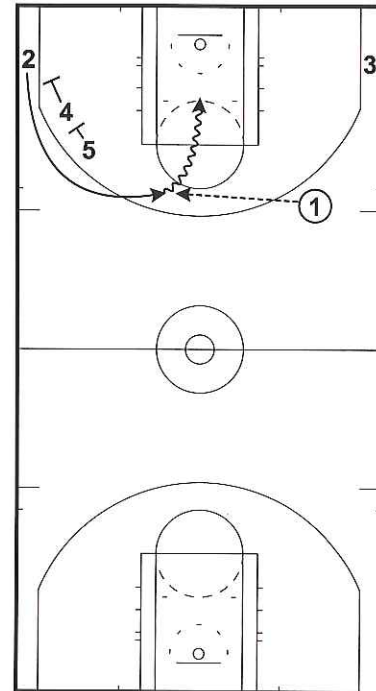
2 TRIES TO MISS TO THE RIGHT SIDE OF THE RIM, 4 TRIES TO ROOT HIS MAN UP THE LANE AND THEN SET A SCREEN ON 5'S MAN, 1 SCREENS FOR 3 WHO FLIES DOWN THE LANE

Jump Ball
Frame 1



BALL IS BACKTIPPED TO 1, 2 & 3 RUN THE FLOOR WIDE, 4 & 5 SPURT TO 2'S SIDE, 1 HANDLES UP THE FLOOR LOOKING TO INITIALLY ATTACK

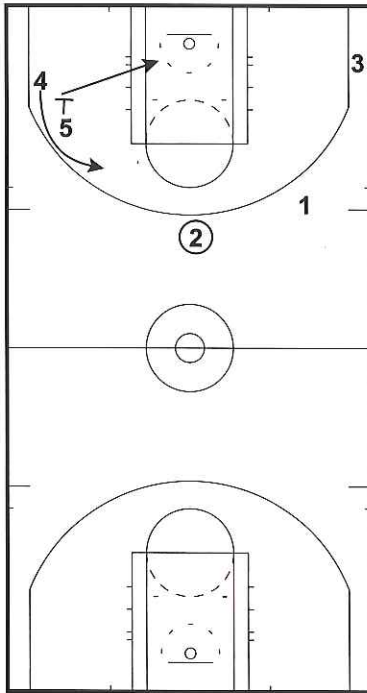
Jump Ball
Frame 2



2 COMES OFF STAGGER FROM 4 & 5, 2 LOOKS TO ATTACK OFF SCREEN

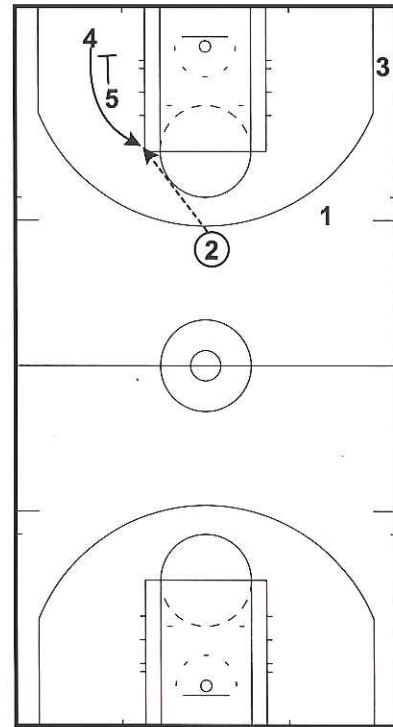
Special Situations

Jump Ball
Frame 3



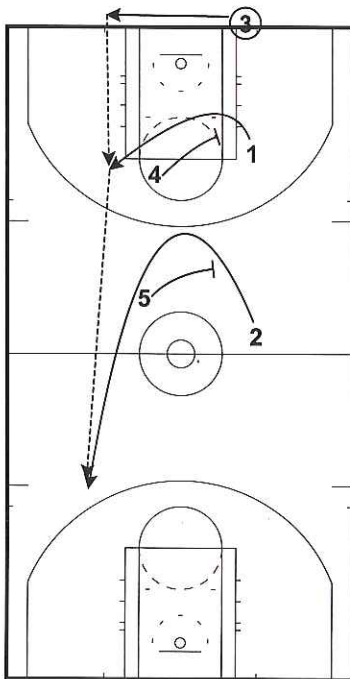
IF 2 DOES NOT HAVE SHOT OR DRIVE, 5
SCREENS 4, 5 DIVES TO BASKET

Jump Ball
Frame 4



PINCH & UTAH

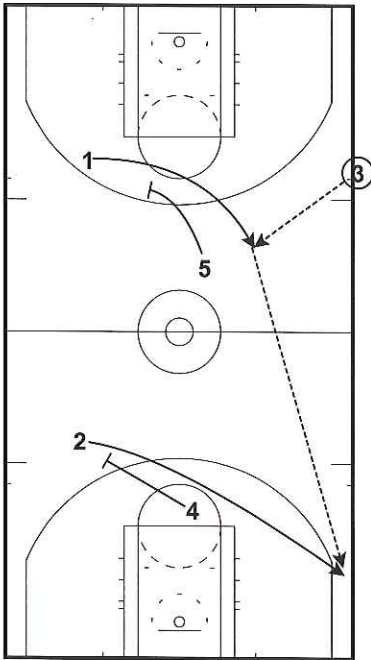
Touchdown
Frame 1



NEED A 3 FULL COURT

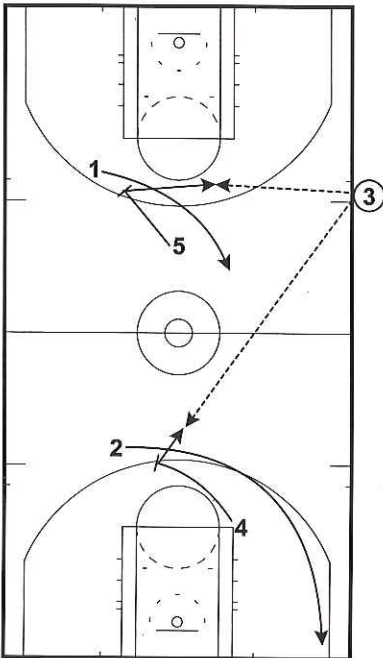
Special Situations

Touchdown 3/4
Frame 1



NEED A SCORE

Touchdown Direct Low Shot Clock
Frame 1



NEED A SCORE